

ROTARY MULCHER

RM 232



PARTS

UK

2nd Edition 2018

 **GREENTEC**

Cutting Edge Technology

IMPORTANT INFORMATION**GreenTec Rotary Mulcher RM 232****PARTS**
2. Edition – April 2018

NOTICE: Please ensure that this manual is handed to the operator before using the machine for the first time. If the machine is resold, the Parts list must be given to the new owner!

The information contained in this Parts list is correct at the time of publication. However, in the course of constant development, changes in specification are inevitable. Should you find the information given in this book different to the machine it relates to please contact the “After Sales Department” for advice.



Merkurvej 25
DK 6000 Kolding
Denmark
Tel: +45 75553644
E-mail: info@greentec.eu
web: www.greentec.eu

CONTENTS

Indhold

Introduction	4
Useful information.....	5
Ordering parts	6
Spare Parts	7
Main frame Overview:	7
Rotor short:.....	9
Rotor long:.....	11
ADGT 1021 Complete rotor:.....	13
Tensioning system Right:	15
Tensioning system Left:	16
Motor Transmission:.....	17
Belt tension pully:	18
Stickers:	19

Introduction

Dear customer!

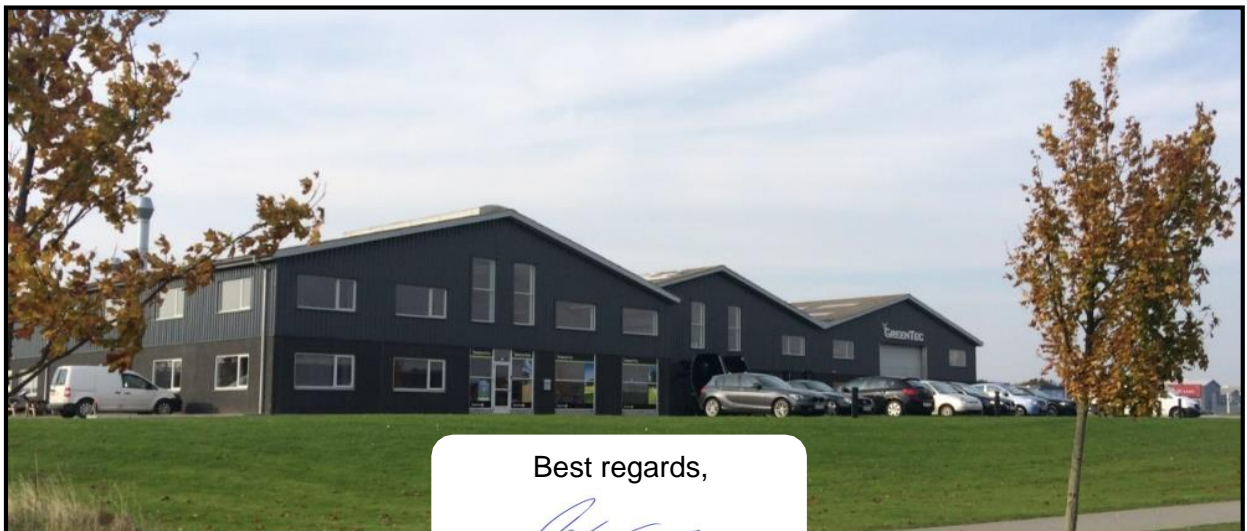
Your new GreenTec machine is constructed with background in more than 20 years' experience with tractor-mounted machines to maintenance of green areas. This machine is produced by the latest technology and recognized safety regulations, standards and regulations.

We want to make a product available in such a way, that neither the use of the machine during transportation or maintenance of the machine causes any damage or misunderstandings.

This parts list contains information that are important and useful for maintaining your GreenTec machine's reliability, dependability and value.

You are welcome to visit our website www.greentec.eu - where the login via the dealer's access gives you the latest updates on instructional and part books on our entire product range.

We hope you will be pleased with your new GreenTec machine.



Best regards,

A handwritten signature in blue ink, appearing to read "John Christensen".

John Christensen
Sales Director GreenTec A/S

GreenTec's vision is to develop and sell quality machines for the maintenance of green areas, including in agriculture, in industry, at airports and in the local sector. Through innovative product development, we will strive to become a leader in our field.

All machines are developed in a simple and functional design in close cooperation with dealers and end users. It is our goal to cover every need in the market segment with preferably two different solutions. In-depth analysis of requirements and serious advice to the customer is offered the best solution, where individual needs can be met through the modularity of the product program.

Our goal is also to offer the best possible after sales service, and a quick and efficient spare parts supply.

Useful information

Before using the machine for the first time, it's the seller's responsibility that the buyer is given this parts list. If the machine is resold, the parts list must be transferred to the new owner.

Please fill out the list below to ensure that the necessary information is at hand when ordering spare parts etc.

Serial No

Delivery date

Dealer

Tel. / E-mail



Merkurvej 25
DK 6000 Kolding
Denmark
Tel: +45 75553644
E-mail: info@greentec.eu
web: www.greentec.eu
Opening hours: Mon-Fri 8-16

Ordering parts

When ordering parts please refer to your parts list to help your dealer with your order.

- **Part number and quantity**
- **Description**
- **Machine model number**
- **Serial number of the machine**
- **Delivery instructions (e.g. next day).**

Delivery is normally via carrier direct to your dealer. Please check with your dealer for stock availability and arrangement of dispatch. Ensure you or your dealer has sufficient cover for parts requirement outside factory hours.

Important Note:

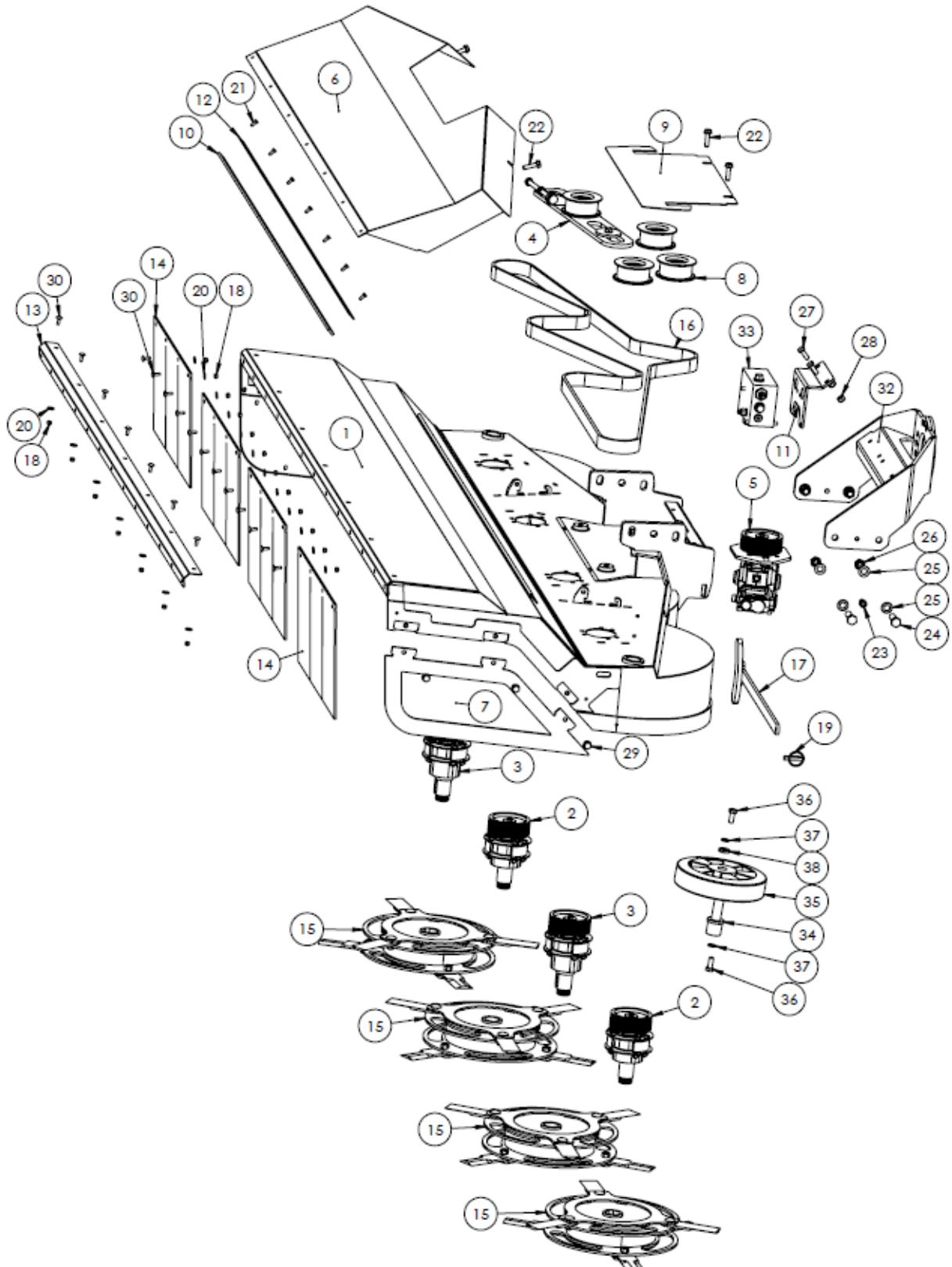
The information contained in this manual is correct at the time of publication. However, in the course of constant development, changes in specification are inevitable. Should you find the information given in this book different to the machine it relates to, please contact the "After Sales Department" for advice.

Key:

LH: Left hand
RH: Right hand

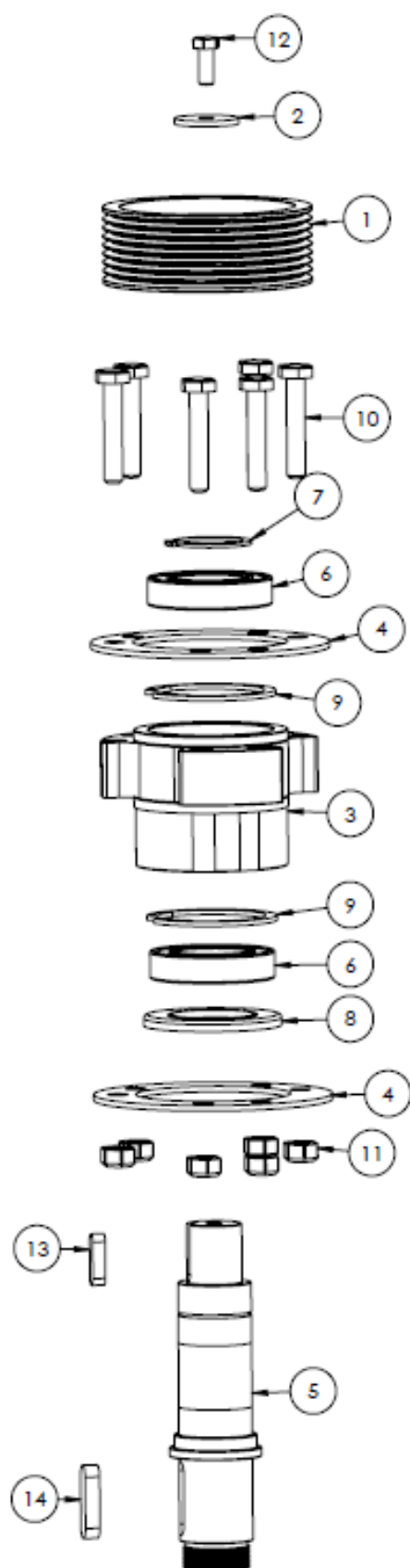
Spare Parts

Main frame Overview:



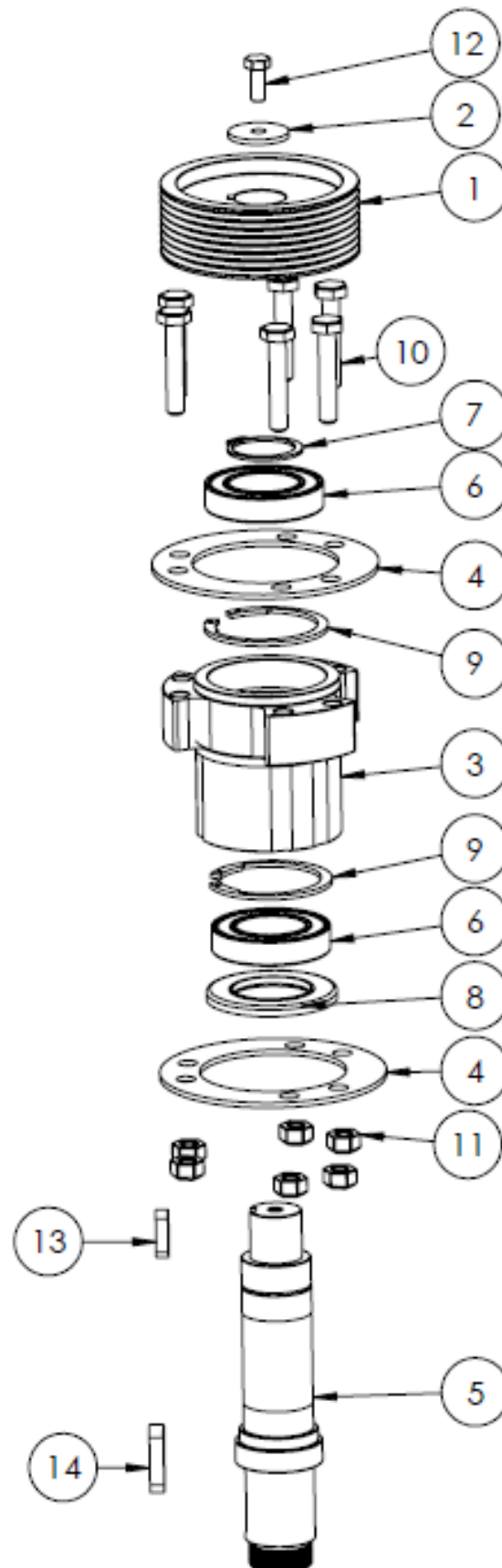
ITEM NO.	PART NUMBER	DESCRIPTION	QTY.
1	8631501	Main body	1
2		See "Rotor short"	2
3		See "Rotor long"	2
4		See" Tensioning system L or R"	1
5		See "Motor transmission"	1
6	8631502	Guard for belt service	1
7	8631503	Sidecover Left	1
8		See "Belt tension pulley"	3
9	8631504	Cover	1
10	8631505	Threaded bar for hinge	1
11	8631506	Bracket for flowdivider "option"	1
12	8631507	Support rail	1
13	8631508	Mounting rail for flap guard	1
14	8638001	Flapguard	4
15	ADGT1021	See "Rotor complete"	4
16	8634001	Belt	1
17	8621507	Tool for blade change	1
18	8482001	Lock nut high	19
19	00.372.01	Lynch pin	1
20	8632001	Washer	19
21	8632003	Bolt	7
22	8622001	Bolt	4
23	8222014	Bolt	2
24	05.291.37	Bolt	4
25	2770454	Washer	8
26	81822001	Lock nut	4
27	200109.0	Bolt	2
28	2770412	Lock nut	2
29	200104.0	Bolt	6
30	8482002	Bolt	19
31	8631509	Sidecover Right	1
32	8621506	Bracket Twiga	1
33	6703014-50	Flowdivider "option"	1
34	8621001	Shaft for support wheel	1
35	8626001	Wheel	1
36	8222006	Bolt	2
37	8222005	Spring washer	2
38	8222011	HD washer	1

Rotor short:



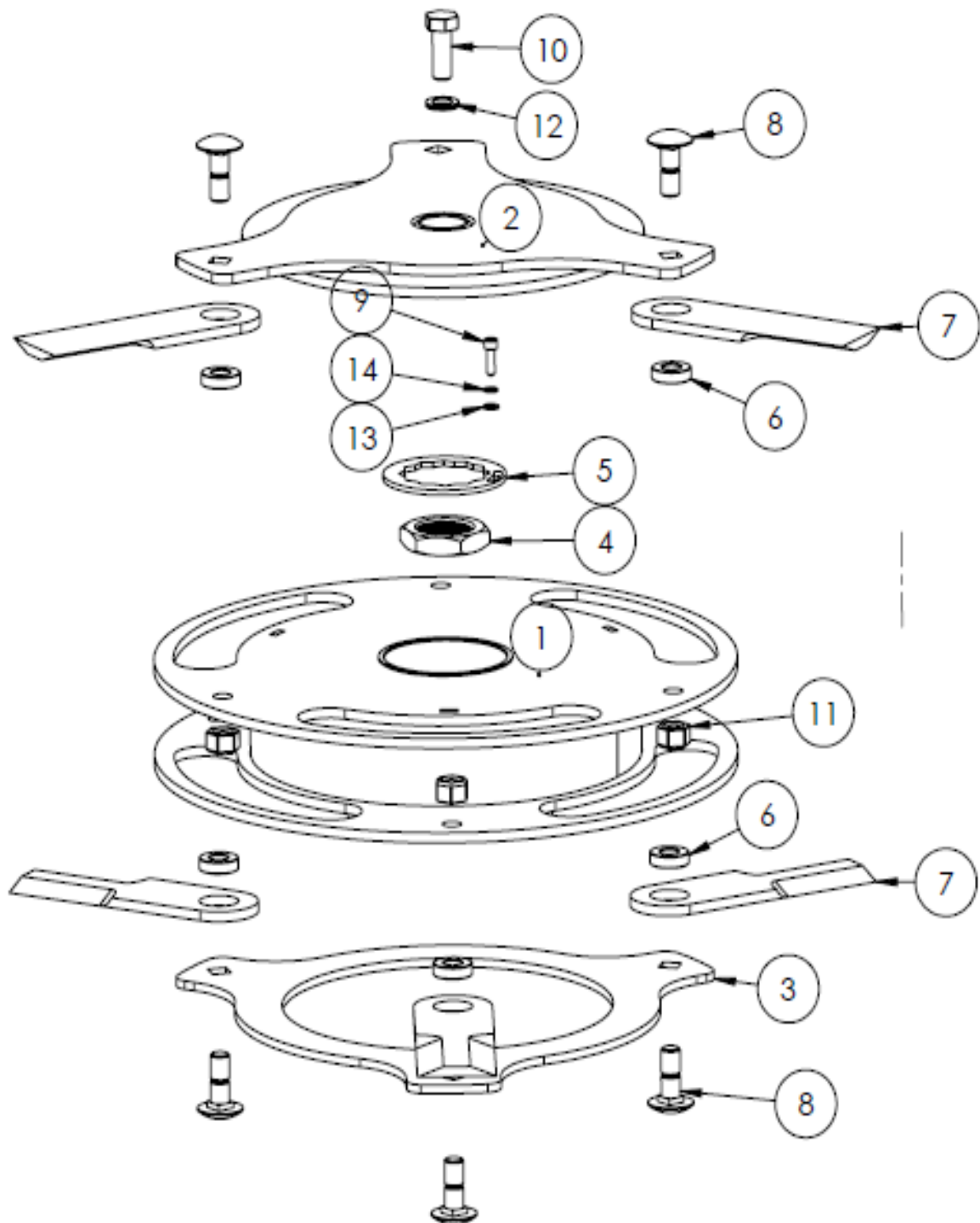
ITEM NO.	PART NUMBER	DESCRIPTION	QTY.
1	8634002	Pully	1
2	8621515	Mount disk	1
3	8621510	Bearing housing short	1
4	8621514	Spacer	2
5	8630001	Rotor short	1
6	8224002	Bearing	2
7	240121.0	Circlip	1
8	8624002	Seal of metal	1
9	2771110	Circlip	2
10	8632007	Bolt	6
11	9040266	Lock nut	6
12	2770402	Bolt	1
13	200234.0	Key	1
14	8634005	Key	1

Rotor long:



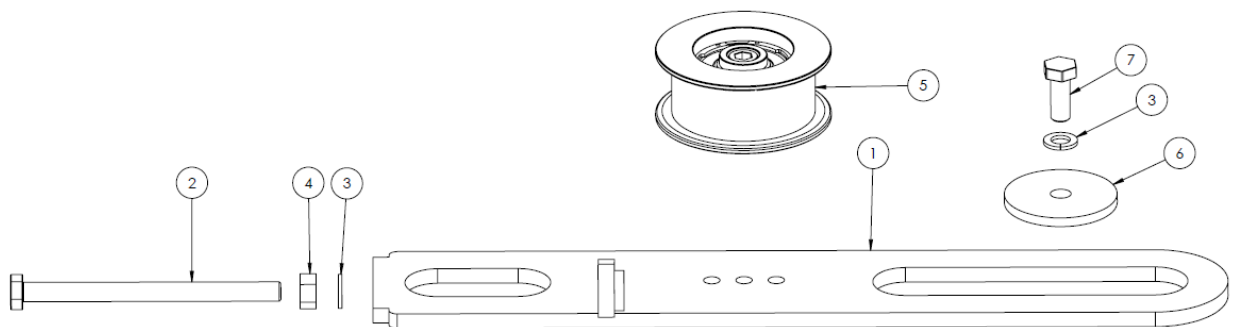
ITEM NO.	PART NUMBER	DESCRIPTION	QTY.
1	8634002	Pully	1
2	8621515	Mount disk	1
3	8621516	Bearing housing long	1
4	8621514	Spacer	2
5	8630002	Rotor long	1
6	8224002	Bearing	2
7	240121.0	Circlip	1
8	8624002	Seal of metal	1
9	2771110	Circlip	2
10	8632007	Bolt	6
11	9040266	Lock nut	6
12	2770402	Bolt	1
13	200234.0	Key	1
14	8634005	Key	1

ADGT 1021 Complete rotor:



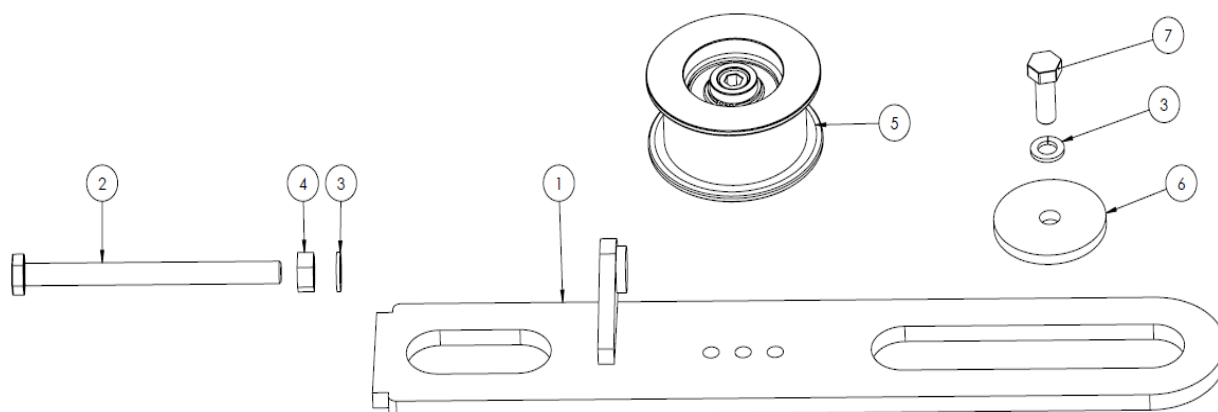
ITEM NO.	PART NUMBER	DESCRIPTION	QTY.
1	8630004	Rotor	1
2	8630005	Upper blade carrier	1
3	8630006	Lower blade carrier	1
4	8630007	Nut	1
5	8630008	Spacer	1
6	8481008	Blade brush	6
7	8497001	Blade	6
8	8481009	Blade bolt	6
9	8632006	Bolt	1
10	8222006	Bolt	1
11	8482008	Lock nut	6
12	1244NL12	Mount disk	1
13	8632005	Facetwasher	1
14	8632004	Washer	1

Tensioning system Right:



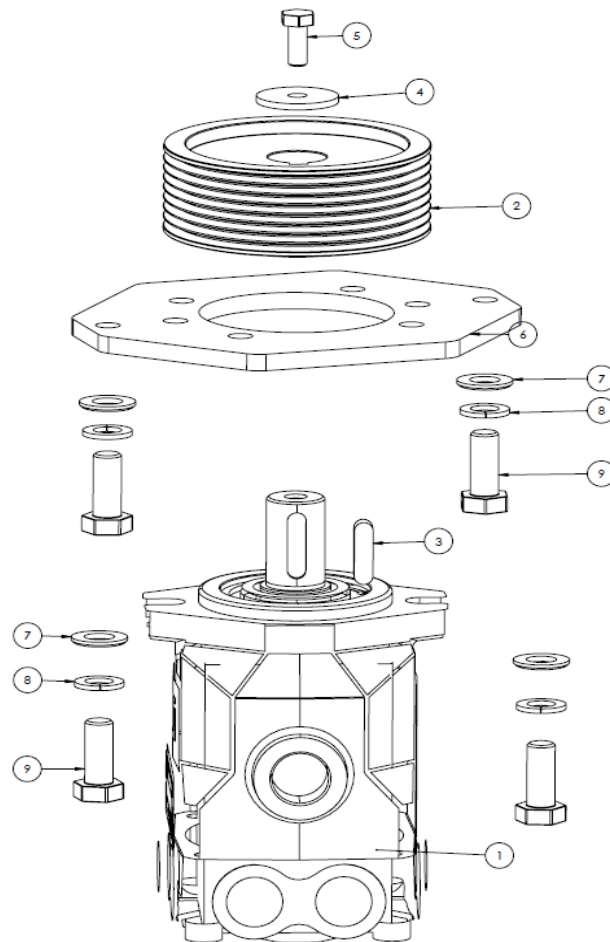
ITEM NO.	PART NUMBER	DESCRIPTION	QTY.
1	8631510	Tension plate RH.	1
2	8632002	Bolt	1
3	8222005	Spring Washer	2
4	2770536	Nut	1
5		See "Belt tension pulley"	1
6	8631511	HD washer	1
7	8222006	Bolt	1

Tensioning system Left:



ITEM NO.	PART NUMBER	DESCRIPTION	QTY.
1	8631512	Tension plade LH.	1
2	8632002	Bolt	1
3	8222005	Spring Washer	2
4	2770536	Nut	1
5		See "Belt tension pully"	1
6	8631511	HD washer	1
7	8222006	Bolt	1

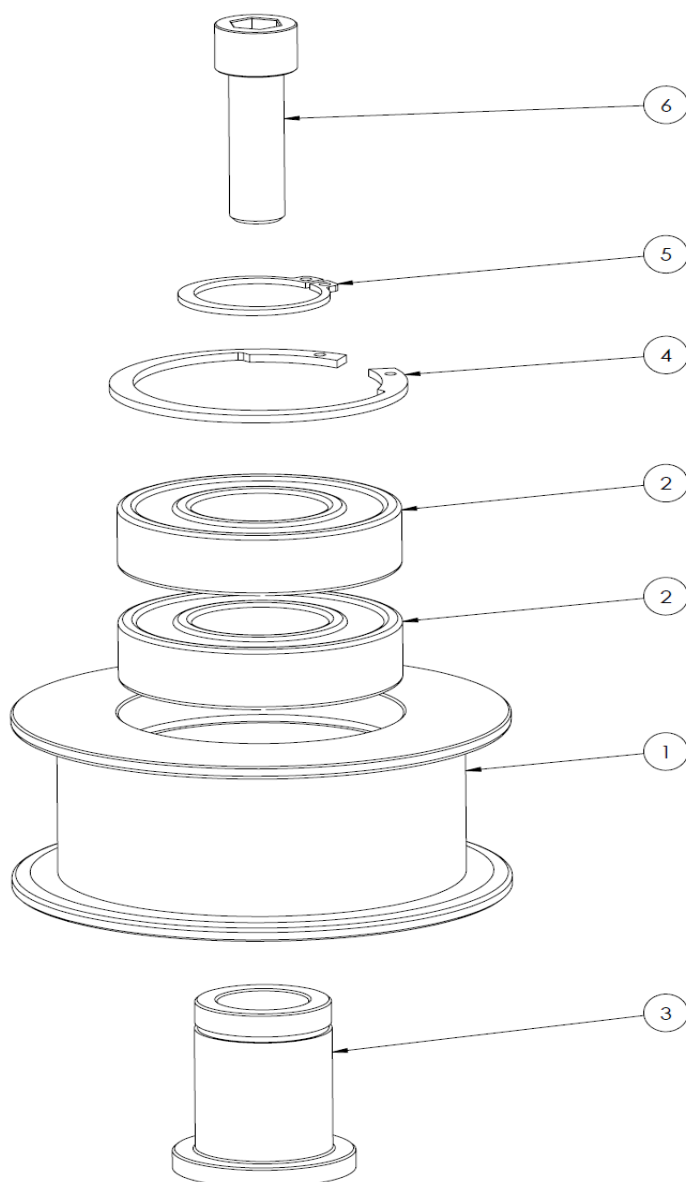
Motor Transmission:



ITEM NO.	PART NUMBER	DESCRIPTION	QTY.
1*	8623001	Motor 21ccm	1
N/S	200230A	Shaft sealkit for piston motor	1
2	8634003	Pully for Motor	1
3	200234.0	Key	1
4	8621515	Mount washer	1
5	2770402	Bolt	1
6	8631513	Motorplate	1
7	6701641	Washer	4
8	8222005	Spring Washer	4
9	8222006	Bolt	4

*Serienr. 217826005 og 217826006 har motor 200231.0 (28cc flow 60 l/min)

Belt tension pulley



ITEM NO.	PART NUMBER	DESCRIPTION	QTY.
1	8634004	Pully for belt tension	1
2	200120.0	Bearing	2
3	8481013	Shaft for belt tension	1
4	200119.0	Circlip	1
5	200121.0	Circlip	1
6	8172003	Bolt	1

Stickers:



RM232 klistermærke - 1147 x 170 mm



RM 232 advarselsmærker1 - 173 x 107 mm



RM 232 advarselsmærker2 - 173 x 107 mm

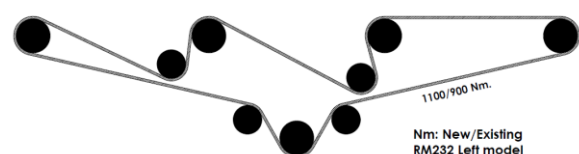
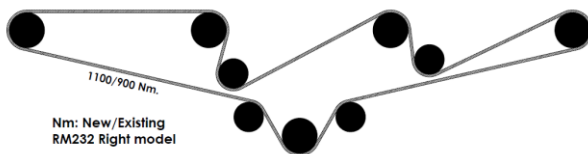


GreenTec_Påbudsmærker - 130 x 25 mm



Made in denmark - 50 x 16 mm

RM232 KITS



ITEM NO.	PART NUMBER	DESCRIPTION	QTY.
	RM232KITS	Stickerkits RM232 (Greentec)	1
	RemdiagramRM232	Stickers Remdiagram L+R	1



Merkurvej 25 | DK-6000 Kolding | Tel.: +45 75 55 36 44 | info@GreenTec.eu | www.GreenTec.eu

Cutting Edge Technology