

ROTARY HEDGE CUTTER

RC 162



PARTS

UK

3rd Edition 2018

 **GREENTEC**

Cutting Edge Technology

IMPORTANT INFORMATION

GreenTec RC 162

PARTS

3.Edition – Januar 2018

NOTICE: Please ensure that this manual is handed to the operator before using the machine for the first time. If the machine is resold, the Parts list must be given to the new owner!

The information contained in this Parts list is correct at the time of publication. However, in the course of constant development, changes in specification are inevitable. Should you find the information given in this book different to the machine it relates to please contact the “After Sales Department” for advice.



Merkurvej 25
DK 6000 Kolding
Denmark
Tel: +45 75553644
E-mail: info@greentec.eu
web: www.greentec.eu

CONTENTS

CONTENTS	4
INTRODUCTION	5
USEFUL INFORMATION	6
ORDERING PARTS	7
SPARE PARTS	8
Main frame Overview:	8
Rotor Outer (2 pcs. on machine):	10
Rotor Centre (1 pcs. on machine):	12
Belt:	14
Motor Transmission:.....	15
Transfers:	17

INTRODUCTION

Dear customer!

Your new GreenTec machine is constructed with background in more than 20 years' experience with tractor-mounted machines to maintenance of green areas. This machine is produced by the latest technology and recognized safety regulations, standards and regulations.

We want to make a product available in such a way, that neither the use of the machine during transportation or maintenance of the machine causes any damage or misunderstandings.

This parts list contains information that are important and useful for maintaining your GreenTec machine's reliability, dependability and value.

You are welcome to visit our website www.greentec.eu - where the login via the dealer's access gives you the latest updates on instructional and part books on our entire product range.

We hope you will be pleased with your new GreenTec machine.



John Christensen
Sales Director GreenTec A/S

GreenTec's vision is to develop and sell quality machines for the maintenance of green areas, including in agriculture, in industry, at airports and in the local sector. Through innovative product development, we will strive to become a leader in our field.

All machines are developed in a simple and functional design in close cooperation with dealers and end users. It is our goal to cover every need in the market segment with preferably two different solutions. In-depth analysis of requirements and serious advice to the customer is offered the best solution, where individual needs can be met through the modularity of the product program.

Our goal is also to offer the best possible after sales service, and a quick and efficient spare parts supply.

Hedge cutter RC162

USEFUL INFORMATION

Before using the machine for the first time, it's the seller's responsibility that the buyer is given this parts list. If the machine is resold, the parts list must be transferred to the new owner.

Please fill out the list below to ensure that the necessary information is at hand when ordering spare parts etc.

Serial No

Delivery date

Dealer

Tel. / E-mail



Merkurvej 25
DK 6000 Kolding
Denmark
Tel: +45 75553644
E-mail: info@greentec.eu
web: www.greentec.eu
Opening hours: Mon-Fri 8-16

ORDERING PARTS

When ordering parts please refer to your parts list to help your dealer with your order.

- *Part number and quantity*
- *Description*
- *Machine model number*
- *Serial number of the machine*
- *Delivery instructions (e.g. next day).*

Delivery is normally via carrier direct to your dealer. Please check with your dealer for stock availability and arrangement of dispatch. Ensure you or your dealer has sufficient cover for parts requirement outside factory hours.

Important Note:

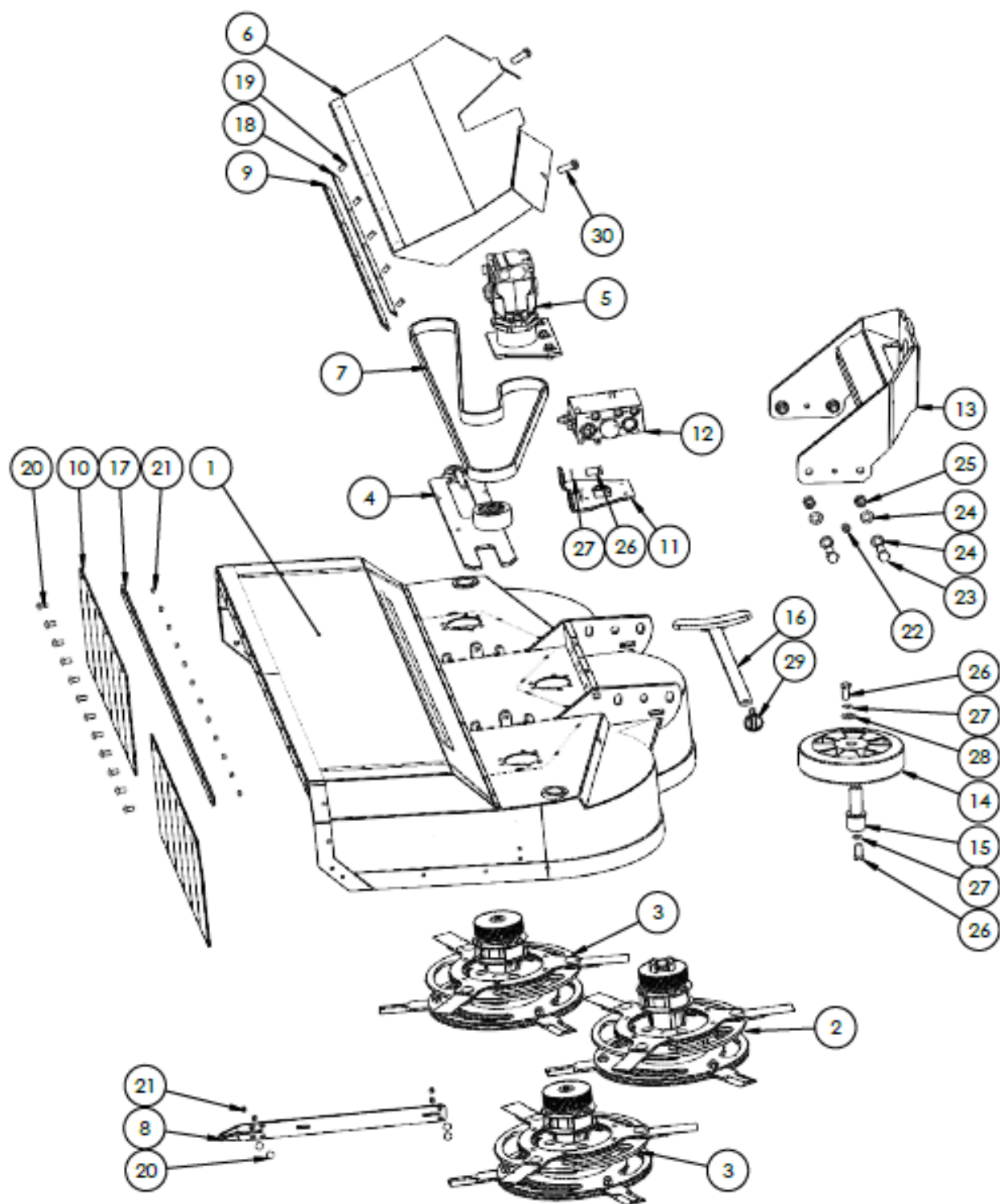
The information contained in this manual is correct at the time of publication. However, in the course of constant development, changes in specification are inevitable. Should you find the information given in this book different to the machine it relates to, please contact the "After Sales Department" for advice.

Key:

LH: Left hand
RH: Right hand

SPARE PARTS

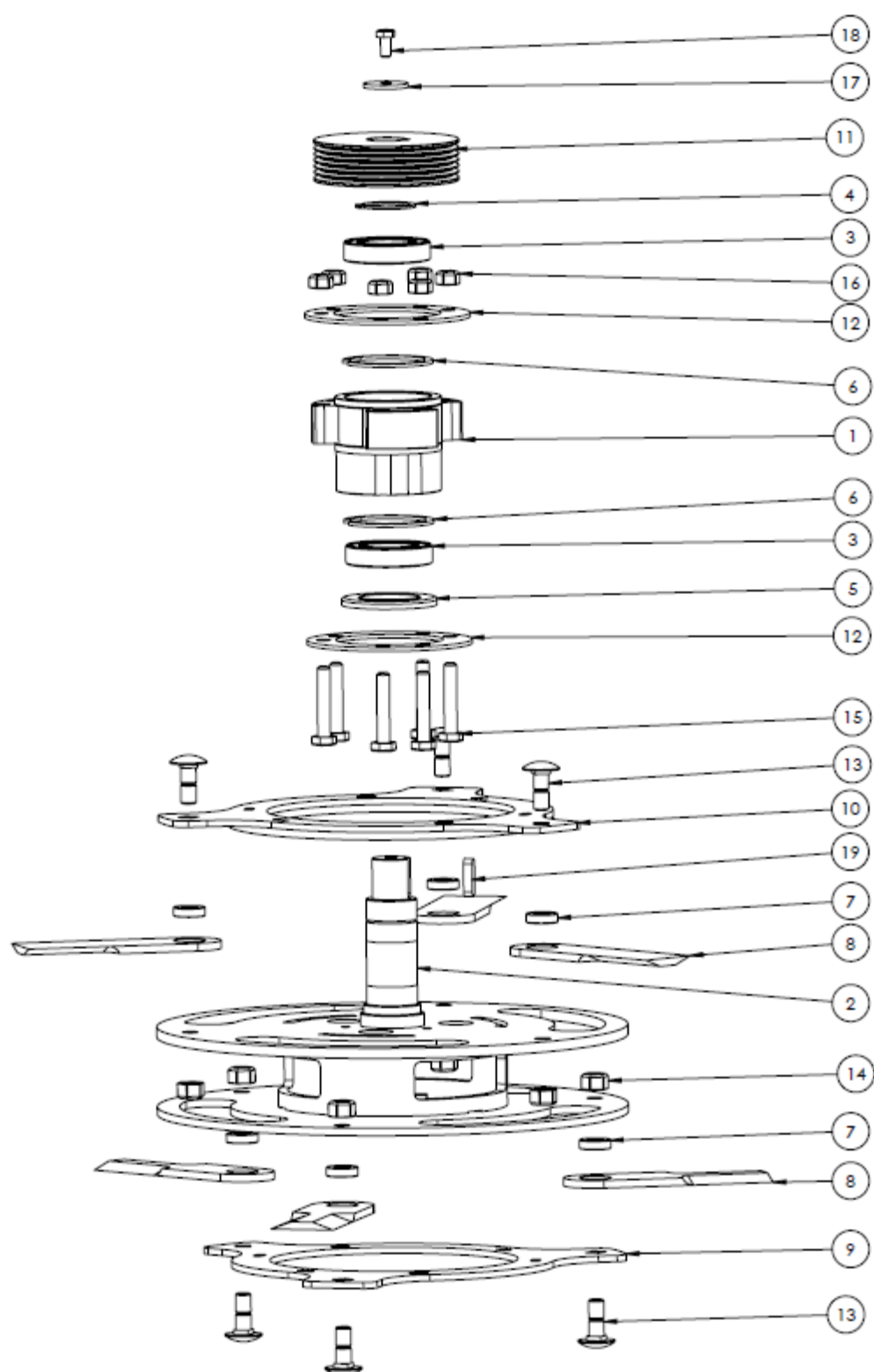
Main frame Overview:



Main frame Overview:

ITEM NO.	PART NUMBER	DESCRIPTION	QTY.
1	8621501	Body	1
2		See "Rotor Center"	1
3		See "Rotor Outer"	2
4		See "Belt Tension system"	1
5		See "Motor Transmission"	1
6	8621502	Guard for belt drive	1
7	8624001	Belt	1
8	8481506	Branch guide	1
9	8621504	Threaded bar for hinge	1
10	8628001	Flap guard	2
11	8621505	Bracket for flow divider	1
12	6703014	Flow divider (option)	1
13	8621506	Head bracket for Twiga mount	1
14	8626001	Wheel	1
15	8621001	Shaft for support Wheel	1
16	8621507	Tool for blade change	1
17	8621508	Rail for flap guard	1
18	8621509	Support rail	1
19	8482006	Bolt	5
20	8482002	Bolt	16
21	8482001	Lock nut high	16
22	8222014	Bolt	2
23	05.291.37	Bolt	4
24	2770454	Washer	8
25	81822001	Nut	4
26	8222006	Bolt	4
27	8222005	Spring washer	4
28	8222011	Washer HD	1
29	00.372.01	Lynch Pin	1
30	8622001	Bolt	2

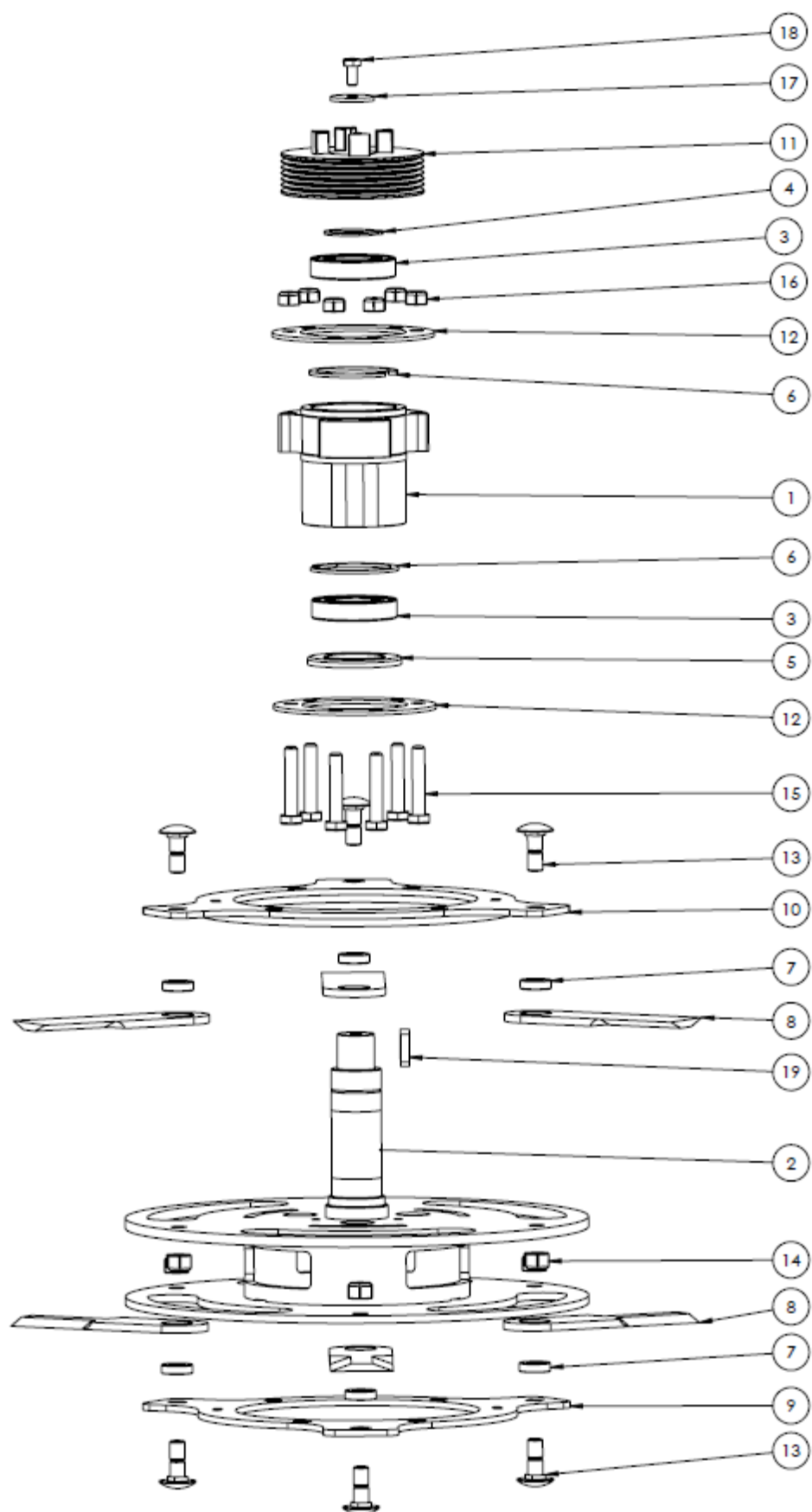
Rotor Outer (2 pcs. on machine):



Rotor Outer (2 pcs. on machine):

ITEM NO.	PART NUMBER	DESCRIPTION	QTY.
1	8621510	Bearing housing outer	1
2	8621511	Rotor shaft with blade carrier (outer)	1
3	8224002	Bearing	2
4	240121.0	Circlip	1
5	8624002	Seal of metal	1
6	2771110	Circlip	2
7	8481008	Blade bush	6
8	8497001	Blade	6
9	8621512	Blade carrier lower	1
10	8621513	Blade carrier upper	1
11	8624003	Pully	1
12	8621514	Spacer	2
13	8481009	Blade bolt	6
14	8482008	Lock Nut	6
15	8622002	Bolt 10.9	6
16	9040266	Lock nut 10.9	6
17	8621515	Mount washer	1
18	81822005	Bolt	1
19	200234.0	Key	1

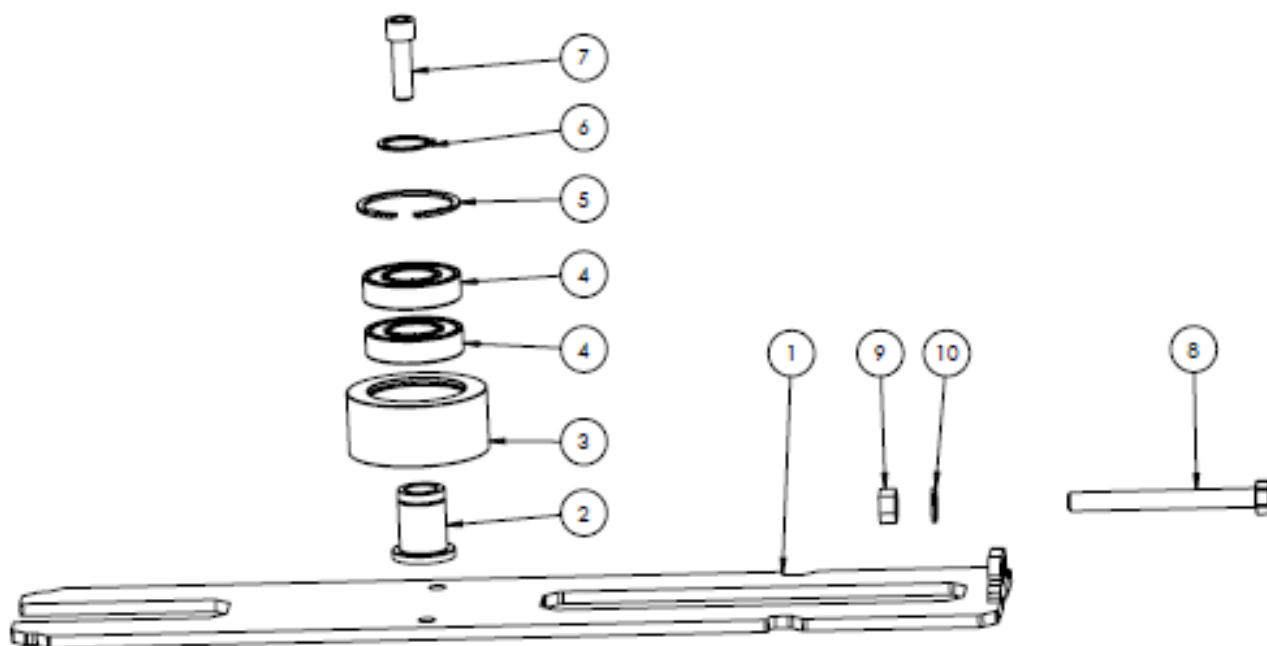
Rotor Centre (1 pcs. on machine):



Rotor Centre (1 pcs. on machine):

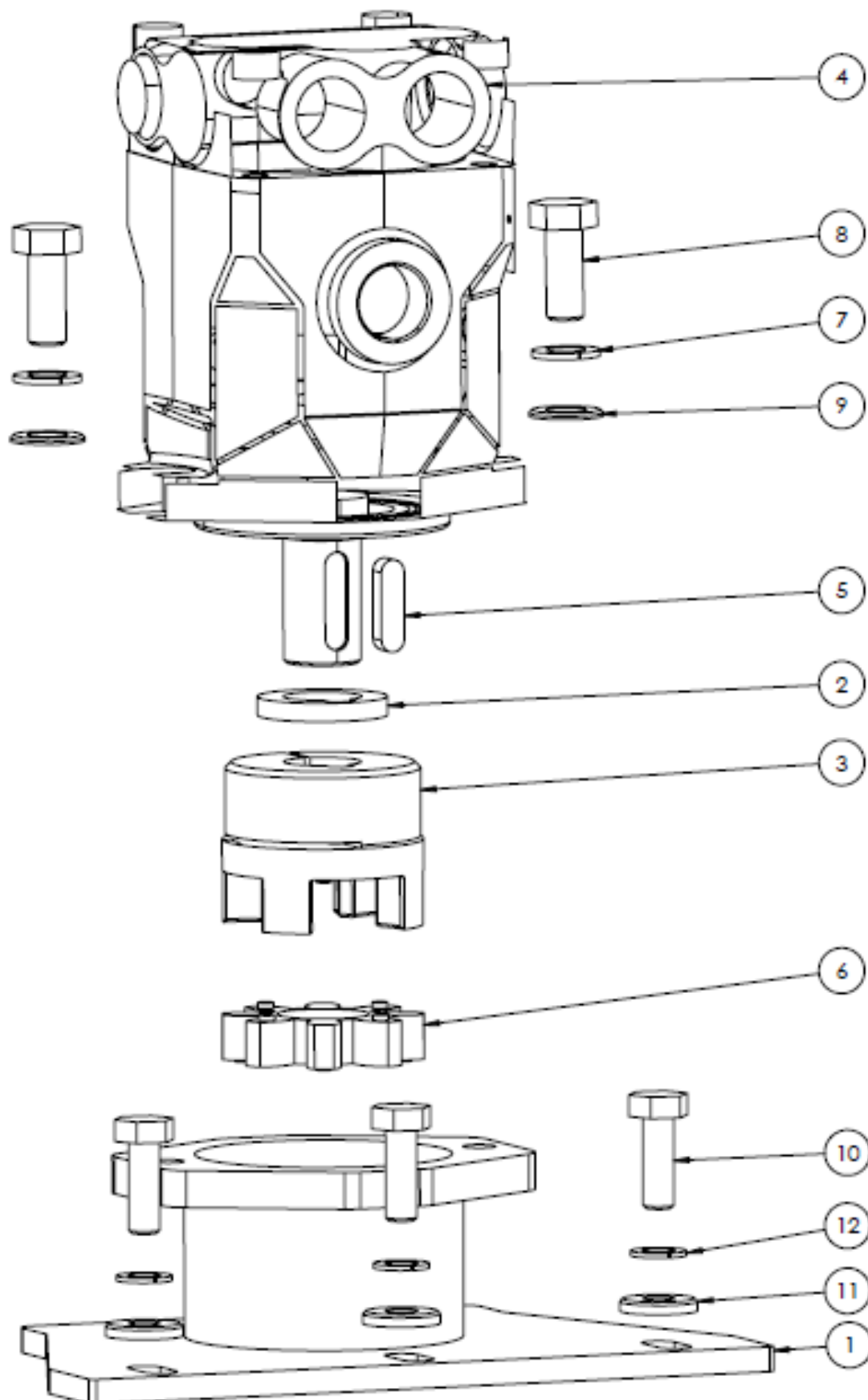
ITEM NO.	PART NUMBER	DESCRIPTION	QTY.
1	8621516	Bearing housing center	1
2	8621517	Rotor shaft with blade carrier (center)	1
3	8224002	Bearing	2
4	240121.0	Circlip	1
5	8624002	Seal of metal	1
6	2771110	Circlip	2
7	8481008	Blade bush	6
8	8497001	Blade	6
9	8621512	Blade carrier lower	1
10	8621513	Blade carrier upper	1
11	8624004	Pully with claw	1
12	8621514	Spacer	2
13	8481009	Blade bolt	6
14	8482008	Lock nut	6
15	9040266	Bolt 10.9	6
16	8622003	Lock nut 10.9	6
17	8621515	Mount washer	1
18	81822005	Bolt	1
19	200234.0	Key	1

Belt:



ITEM NO.	PART NUMBER	DESCRIPTION	QTY.
1	8621518	Tension Plate RH. / LH.	1
2	8481013	Shaft for belt tension	1
3	8481014	Pully for belt tension	1
4	200120.0	Bearing	2
5	200119.0	Circlip inner	1
6	200121.0	Circlip Outer	1
7	8482011	Bolt	1
8	8362007	Bolt	1
9	2770536	Nut	1
10	8222005	Spring washer	1

Motor Transmission:



Motor Transmission:

ITEM NO.	PART NUMBER	DESCRIPTION	QTY.
1	8621519	Bracket for motor drive	1
2	8621002	Spacer	1
3	8626002	Claw	1
4#	8623001	Motor	1
7	200234.0	Key	1
6	8486004	Elastic element	1
7	8222005	Spring washer	2
8	8222006	Bolt	2
9	2770434	Washer	2
10	200109.0	Bolt	3
11	8142003	Washer HD	3
12	8222003	Spring washer	3
Not shown	200230A	Shaft seal kit for motor	1
Not shown	200230B	Seal kit complet for motor	1
Not shown	200230C	Shaft repair kit with bearing + 200230B	1

4# Machine after 15/6 2018

Transfers:



RC162 klistermærke – 950 x 145 mm



RC162 advarselsmærker – 317 x 112 mm



GreenTec_påbudsmærker – 130 x 25 mm



Made in denmark – 50 x 16 mm

RC162 KITS

ITEM NO.	PART NUMBER	DESCRIPTION	QTY.
1	RC162KITS	TransfersRC-162	1



Merkurvej 25 | DK-6000 Kolding | Tel.: +45 75 55 36 44 | info@GreenTec.eu | www.GreenTec.eu

Cutting Edge Technology

