

# ROTARY HEDGE CUTTER

## RC 132



**PARTS**

**UK**

**2<sup>nd</sup> Edition 2019**

 **GREENTEC**

Cutting Edge Technology





**IMPORTANT INFORMATION****GreenTec RC 132****PARTS****2. Edition – Marts 2019**

**NOTICE:** Please ensure that this manual is handed to the operator before using the machine for the first time. If the machine is resold, the Parts list must be given to the new owner!

The information contained in this Parts list is correct at the time of publication. However, in the course of constant development, changes in specification are inevitable. Should you find the information given in this book different to the machine it relates to please contact the “After Sales Department” for advice.



Merkurvej 25  
DK 6000 Kolding  
Denmark  
Tel: +45 75553644  
E-mail: [info@greentec.eu](mailto:info@greentec.eu)  
web: [www.greentec.eu](http://www.greentec.eu)

---

## CONTENTS

### Indhold

<b>INTRODUCTION .....</b>	<b>4</b>
<b>USEFUL INFORMATION .....</b>	<b>5</b>
<b>ORDERING PARTS .....</b>	<b>6</b>
<b>SPARE PARTS .....</b>	<b>7</b>
Main frame Overview .....	7
Rotor Outer (2 pcs. on machine) .....	9
Rotor Centre (1 pcs. on machine) .....	11
Tensioning system .....	13
Motor Transmission.....	14
Stickers .....	16
Parts Bulletin .....	17



---

## INTRODUCTION

Dear customer!

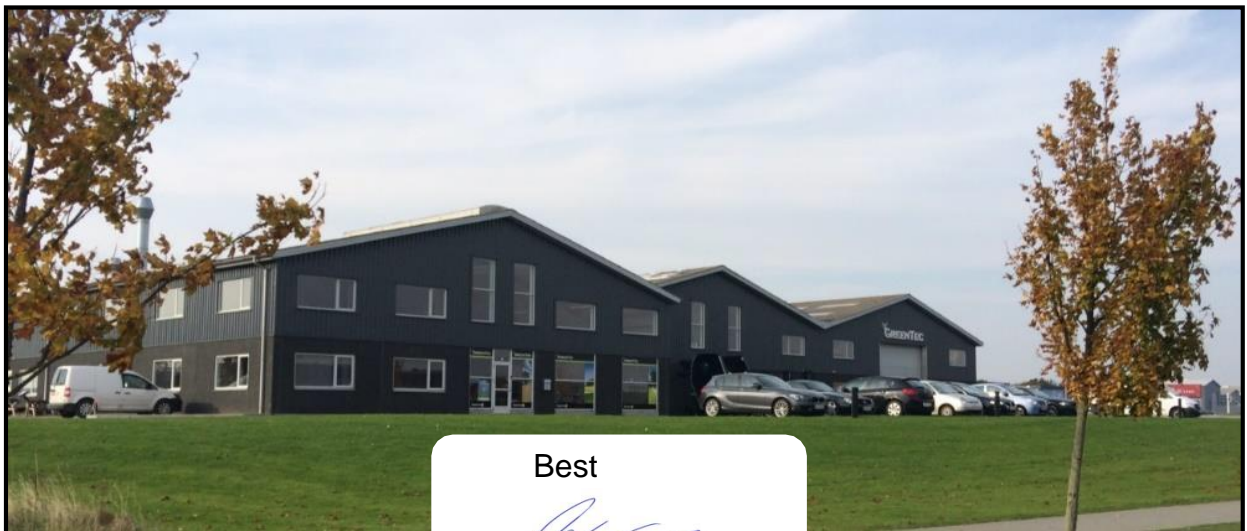
Your new GreenTec machine is constructed with background in more than 20 years' experience with tractor-mounted machines to maintenance of green areas. This machine is produced by the latest technology and recognized safety regulations, standards and regulations.

We want to make a product available in such a way, that neither the use of the machine during transportation or maintenance of the machine causes any damage or misunderstandings.

This parts list contains information that are important and useful for maintaining your GreenTec machine's reliability, dependability and value.

You are welcome to visit our website [www.greentec.eu](http://www.greentec.eu) - where the login via the dealer's access gives you the latest updates on instructional and part books on our entire product range.

We hope you will be pleased with your new GreenTec machine.



Best

A blue ink signature, likely of John Christensen, written in a cursive style.

John Christensen  
Sales Director GreenTec  
A/S

**GreenTec's** vision is to develop and sell quality machines for the maintenance of green areas, including in agriculture, in industry, at airports and in the local sector. Through innovative product development, we will strive to become a leader in our field.

All machines are developed in a simple and functional design in close cooperation with dealers and end users. It is our goal to cover every need in the market segment with preferably two different solutions. In-depth analysis of requirements and serious advice to the customer is offered the best solution, where individual needs can be met through the modularity of the product program.

Our goal is also to offer the best possible after sales service, and a quick and efficient spare parts supply.

---

## USEFUL INFORMATION

Before using the machine for the first time, it's the seller's responsibility that the buyer is given this parts list. If the machine is resold, the parts list must be transferred to the new owner.

Please fill out the list below to ensure that the necessary information is at hand when ordering spare parts etc.

**Serial No**

**Delivery date**

**Dealer**

**Tel. / E-mail**



Merkurvej 25  
DK 6000 Kolding  
Denmark  
Tel: +45 75553644  
E-mail: [info@greentec.eu](mailto:info@greentec.eu)  
web: [www.greentec.eu](http://www.greentec.eu)  
Opening hours: Mon-Fri 8-16

---

## ORDERING PARTS

When ordering parts please refer to your parts list to help your dealer with your order.

- *Part number and quantity*
- *Description*
- *Machine model number*
- *Serial number of the machine*
- *Delivery instructions (e.g. next day).*

Delivery is normally via carrier direct to your dealer. Please check with your dealer for stock availability and arrangement of dispatch. Ensure you or your dealer has sufficient cover for parts requirement outside factory hours.

### **Important Note:**

The information contained in this manual is correct at the time of publication. However, in the course of constant development, changes in specification are inevitable. Should you find the information given in this book different to the machine it relates to, please contact the "After Sales Department" for advice.

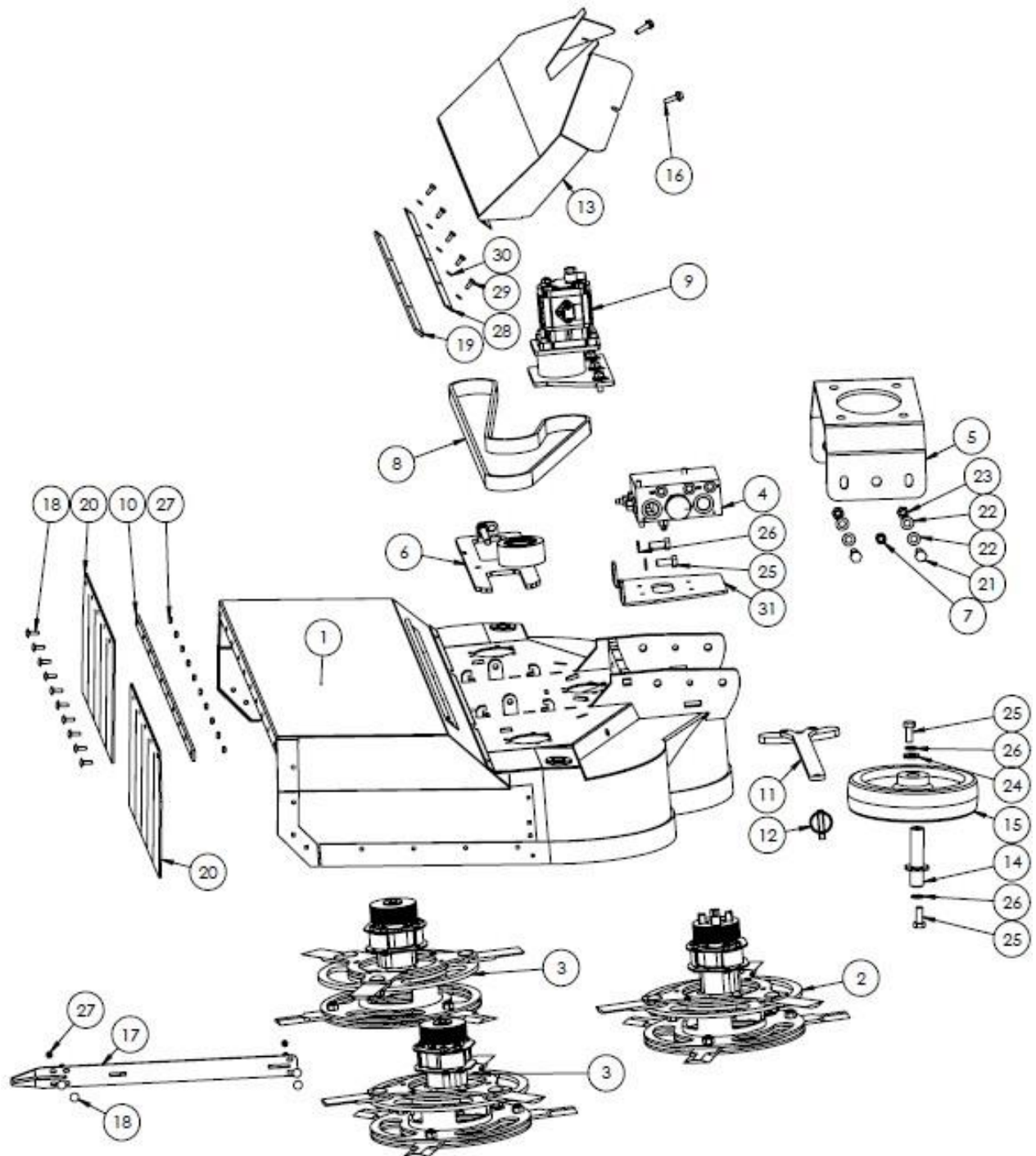
### **Key:**

**LH:** Left hand  
**RH:** Right hand



## SPARE PARTS

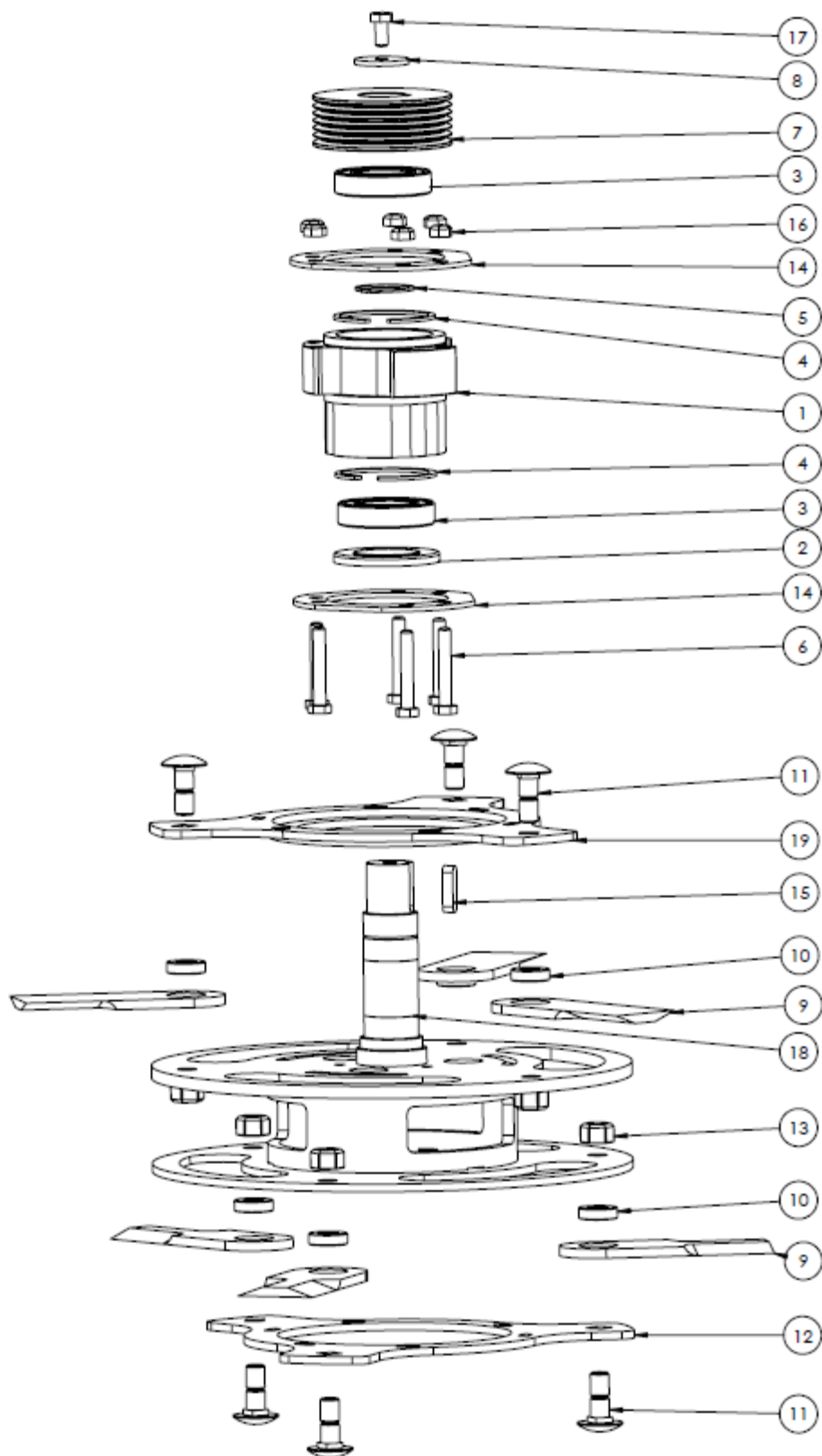
### Main frame Overview



## Main frame Overview

ITEM NO.	PART NUMBER	DESCRIPTION	QTY.
1	8481502	Main Body RH/LH	1
2		See <b>"Rotor Centre"</b>	1
3		See <b>"Rotor Outer"</b>	2
4	6703014	Flowdivider <b>"OPTION"</b>	1
5	8481503	Bracket for Spearhead Twiga Compact	1
6		See <b>"Tensioning system"</b>	1
7	8482005	Bolt	2
8	8484001	Belt	1
9		See <b>"Motor Transmission"</b>	1
10	8481001	Mounting rail for flap guard	1
11	8481504	Tool for blade change	1
12	8486002	Lynch pin	1
13	8481505	Guard for belt drive	1
14	8481002	Wheel shaft	1
15	8486001	Support wheel	1
16	8482003	Bolt for cover	2
17	8481506	Branch guide	1
18	8482002	Carriage bolt	14
19	8481004	Threaded bar for hinge	1
20	8488001	Flap guard (two-piece)	2
21	8362006	Bolt	4
22	2770434	Washer	8
23	8362005	Lock nut	4
24	8222011	Washer HD	1
25	8222006	Bolt	4
26	8222005	Spring washer	4
27	8482001	Lock nut high	14
28	8481005	Support rail	1
29	8632003	Bolt	5
30	8482004	Washer	5
31	8481003	Bracket for flowdivider <b>"OPTION"</b>	1

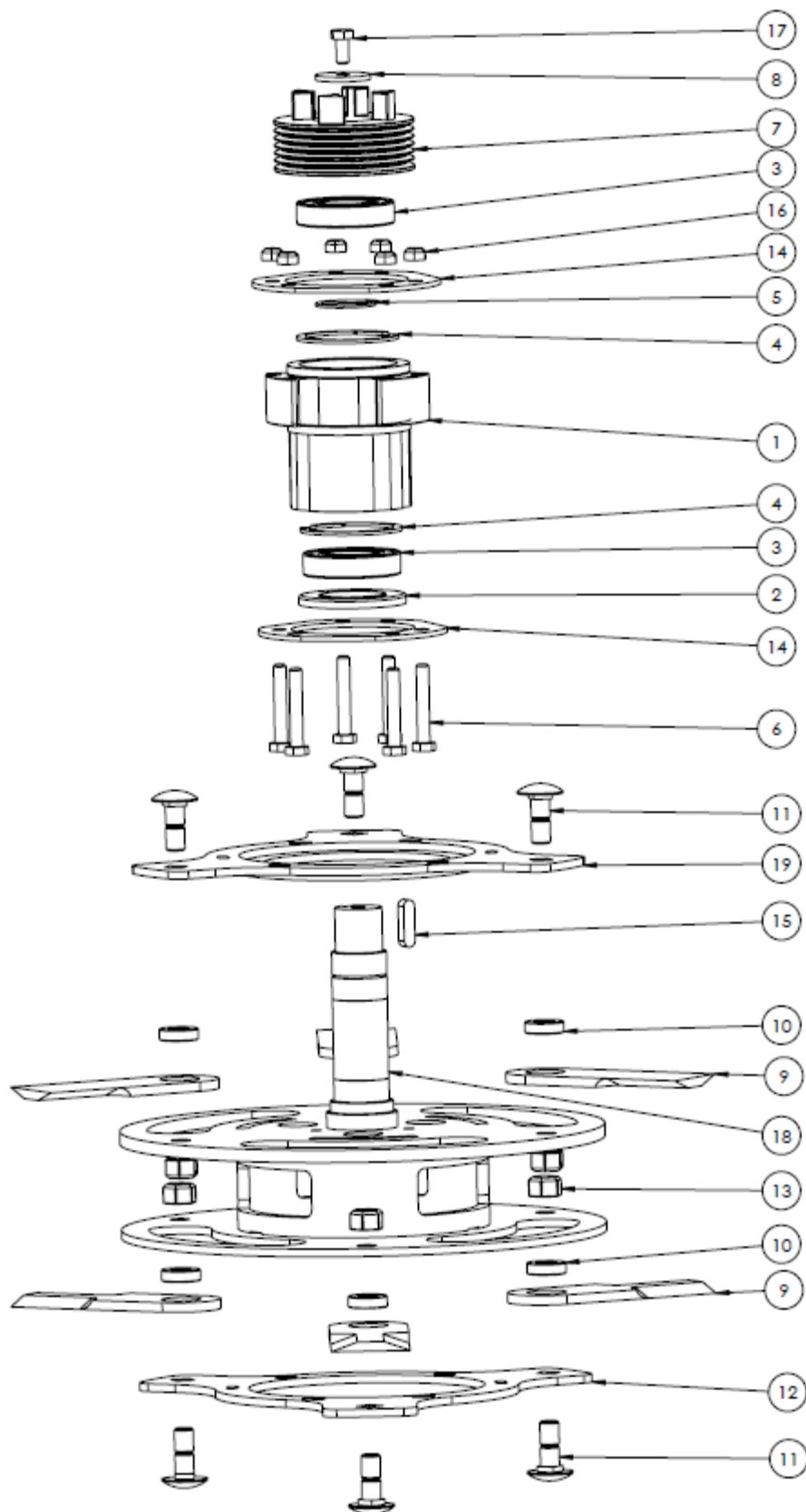
## Rotor Outer (2 pcs. on machine)



Rotor Outer (2 pcs. on machine)

ITEM NO.	PART NUMBER	DESCRIPTION	QTY.
1	8481006	Bearing housing outer	1
2	8484002	Seal of metal	1
3	8484003	Bearing	2
4	200119.0	Circlip	2
5	0162001.0	Circlip	1
6	8482007	Bolt special 10.9	6
7	8484004	Pully	1
8	8481007	Mount disk	1
9	8487001	Blade	6
10	8481008	Blade bush	6
11	8481009	Blade bolt	6
12	8481011	Lower blade carrier	1
13	8482008	Lock Nut	6
14	8481010	Spacer	2
15	200234.0	Key	1
16	8482009	Lock nut 10.9	6
17	8482010	Bolt	1
18	8481507	Rotor shaft with blade carrier (outer)	1
19	8481508	Upper blade carrier	1

## Rotor Centre (1 pcs. on machine)

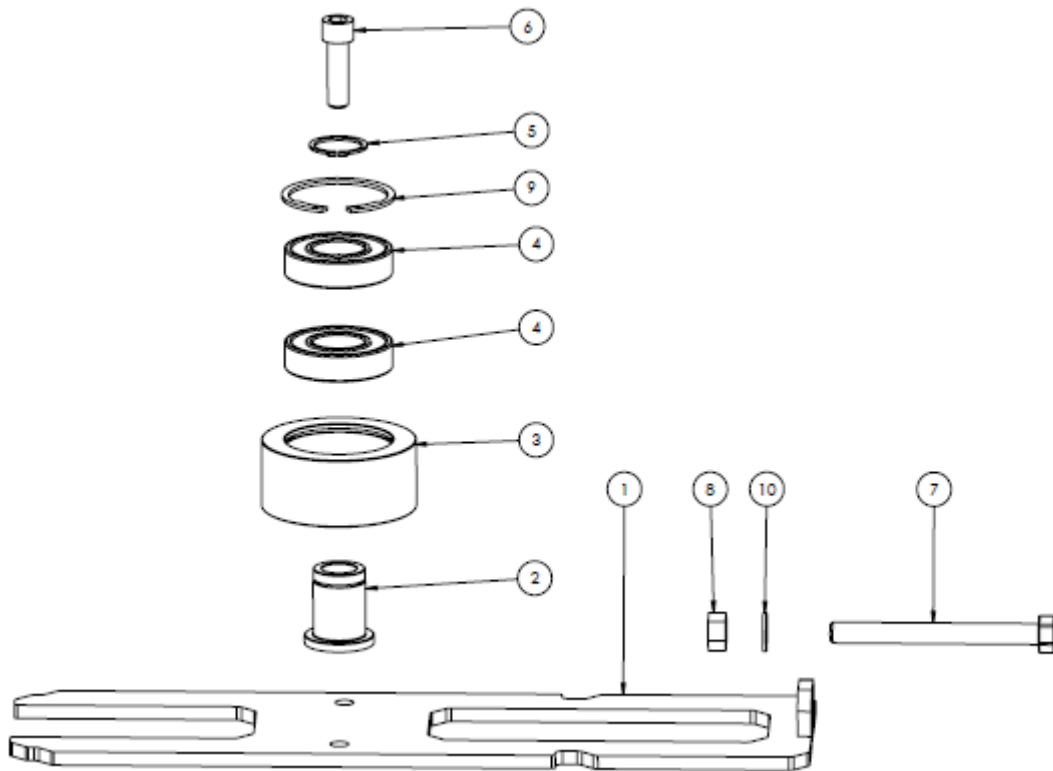


Rotor Centre (1 pcs. on machine)

ITEM NO.	PART NUMBER	DESCRIPTION	QTY.
1	8481012	Bearing housing for center rotor	1
2	8484002	Seal of metal	1
3	8484003	Bearing	2
4	200119.0	Circlip	2
5	0162001.0	Circlip	1
6	8482007	Bolt special 10.9	6
7	8484006	Pully with claw	1
8	8481007	Mount disk	1
9	8487001	Blade	6
10	8481008	Blade bush	6
11	8481009	Blade bolt	6
12	8481011	Lower blade carrier	1
13	8482008	Lock nut	6
14	8481010	Cover for bearing housing	2
15	8484005	Key	1
16	8482009	Lock nut 10.9	6
17	8482010	Bolt	1
18	8481509	Rotor shaft with blade carrier (center)	1
19	8481508	Upper blade carrier	1

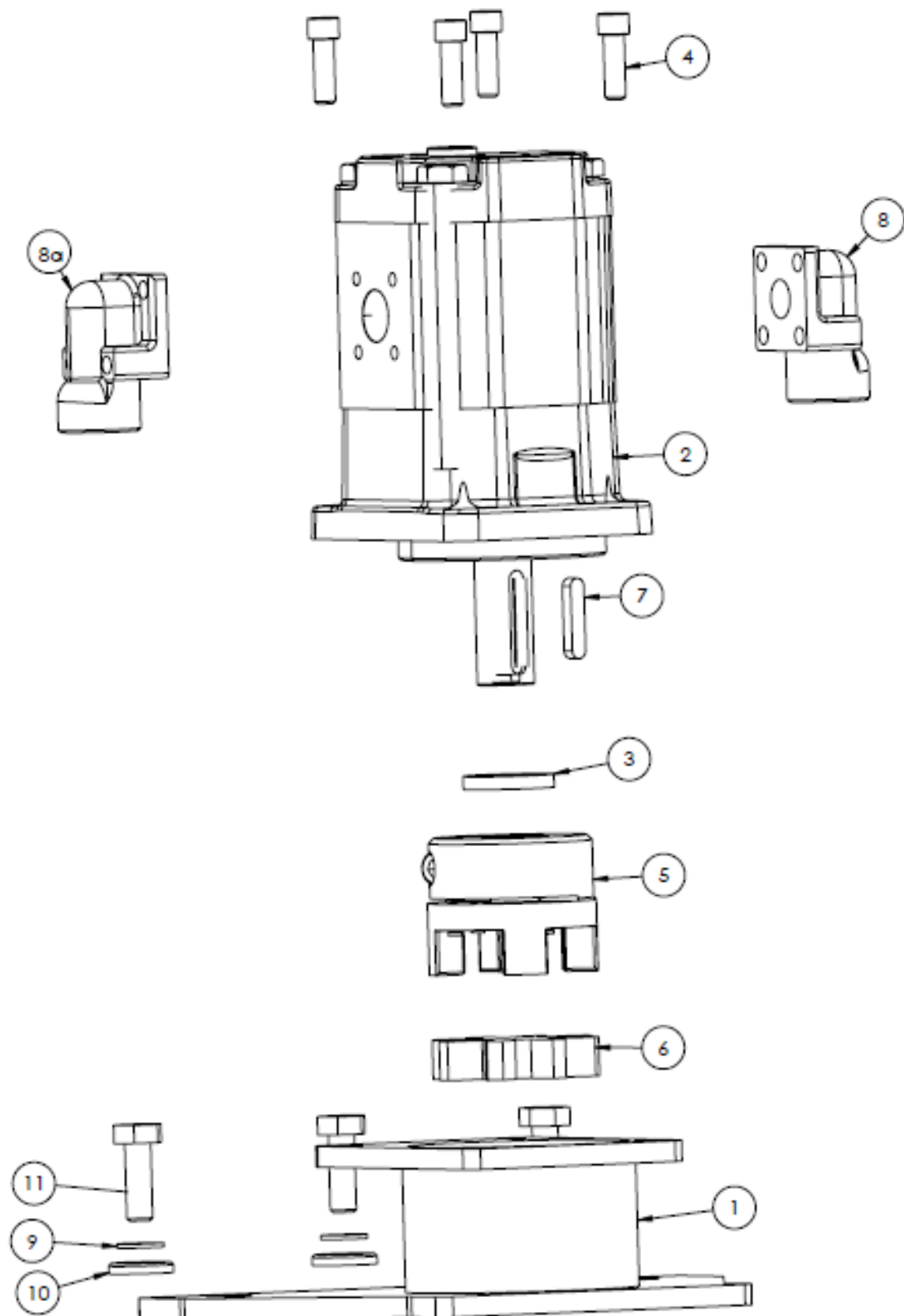


## Tensioning system



ITEM NO.	PART NUMBER	DESCRIPTION	QTY.
1	8481510	Tension plate RH. / LH.	1
2	8481013	Shaft for belt tension	1
3	8481014	Pully for belt tension	1
4	200120.0	Bearing	2
5	200121.0	Circlip	1
6	8482011	Bolt	1
7	8362007	Bolt	1
8	2770536	Nut	1
9	200119.0	Circlip	1
10	8222003	Spring washer	1

## Motor Transmission



## Motor Transmission

New MOTOR from serie nbr. 219832089 –  
Oldere motor must be changed with new motor 8173004,

Remenber to ordre:

1. Port elbow 8173005/8173006
2. Bolt 8482012 4 pcs
3. Claw housing 8481515

[See partsbulletin P001-2019](#)

ITEM NO.	PART NUMBER	DESCRIPTION	QTY.
1	8481515	Claw housing	1
2	8173004	Motor	1
3	8481015	Spacer	1
4	8482012	Bolt	4
5	8486003	Claw	1
6	8486004	Elastic element	1
7	8484007	Key	1
8	8173005	Port elbow ½"	2/1
8a	8173006	Port elbow ¾"	1
9	8222003	Spring washer	3
10	8142003	HD washer	3
11	200109.0	Bolt	3

## Stickers



RC132 klistermærke - 800x 125 mm



RC132 advarselmærker - 317 x 112 mm



GreenTec\_Forbudsmærker - 130 x 25 mm



Made in denmark - 50 x 16 mm

## RC132 KITS

ITEM NO.	PART NUMBER	DESCRIPTION	QTY.
	RC132KITS	Stickerkit RC-132 (Greentec)	1

## Parts Bulletin

### Motor on RC132 deleted

BulletinNbr: P001-2019

From: 01-03-2019



#### This bulletin applies to those Machines:

- RC132 (until Sparepart nbr. 218832089)

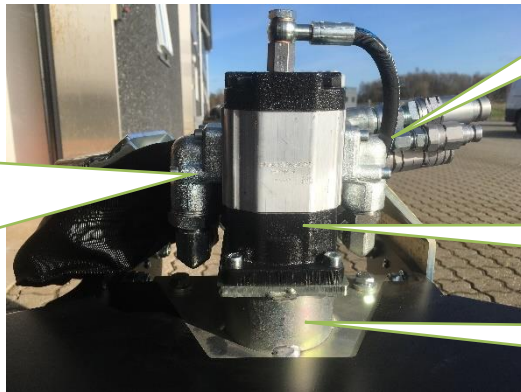
**Motor with nbr. 8483001 deleted.  
Replacing Motor nbr. 8173004**

All RC102 before serialnumber 218832089, has hydraulic motor with partnbr. 8483001.  
When this motor is replaced, use the new motor with Partnbr. 8173004.

When the old motor is changed you must ordre these parts too:

- Portflanger 8173005 1/2" and/or 8173006 3/4" (2 pcs.)
- Motorbracket 8481515 (Claw housing RC132 " only f/motor 8173004")
- Bolt 8482012 (4 pcs)

Portflange  
Only 3/4" when  
RC132 are on  
Twiga Compact  
Otherwise 1/2"



Portflange 1/2"

New motor

Motorbracket

Changes is made in all new partsbooks

Kontakt: GreenTec Parts | Tel: +45 75 55 36 44 | E-mail: [parts@greentec.eu](mailto:parts@greentec.eu)

