

ROTARY HEDGE CUTTER

RC 102



PARTS

UK

2nd Edition 2019

 **GREENTEC**

Cutting Edge Technology

IMPORTANT INFORMATION

GreenTec RC 102

PARTS

2. Edition – Februar 2019

NOTICE: Please ensure that this manual is handed to the operator before using the machine for the first time. If the machine is resold, the Parts list must be given to the new owner!

The information contained in this Parts list is correct at the time of publication. However, in the course of constant development, changes in specification are inevitable. Should you find the information given in this book different to the machine it relates to please contact the “After Sales Department” for advice.



Merkurvej 25
DK 6000 Kolding
Denmark
Tel: +45 75553644
E-mail: info@greentec.eu
web: www.greentec.eu

CONTENTS

CONTENTS	4
INTRODUCTION	5
USEFUL INFORMATION	6
ORDERING PARTS	7
SPARE PARTS	8
Main frame Overview	8
Rotor Outer (2 pcs. on machine)	10
Rotor Centre (1 pcs. on machine)	12
Tensioning system	14
Motor Transmission.....	15
Stickers	17
Parts Bulletin	18

INTRODUCTION

Dear customer!

Your new GreenTec machine is constructed with background in more than 20 years' experience with tractor-mounted machines to maintenance of green areas. This machine is produced by the latest technology and recognized safety regulations, standards and regulations.

We want to make a product available in such a way, that neither the use of the machine during transportation or maintenance of the machine causes any damage or misunderstandings.

This parts list contains information that are important and useful for maintaining your GreenTec machine's reliability, dependability and value.

You are welcome to visit our website www.greentec.eu - where the login via the dealer's access gives you the latest updates on instructional and part books on our entire product range.

We hope you will be pleased with your new GreenTec machine.



Best regards

A handwritten signature in blue ink, appearing to read "John Christensen".

John Christensen
Sales Director GreenTec A/S

GreenTec's vision is to develop and sell quality machines for the maintenance of green areas, including in agriculture, in industry, at airports and in the local sector. Through innovative product development, we will strive to become a leader in our field.

All machines are developed in a simple and functional design in close cooperation with dealers and end users. It is our goal to cover every need in the market segment with preferably two different solutions. In-depth analysis of requirements and serious advice to the customer is offered the best solution, where individual needs can be met through the modularity of the product program.

USEFUL INFORMATION

Before using the machine for the first time, it's the seller's responsibility that the buyer is given this parts list. If the machine is resold, the parts list must be transferred to the new owner.

Please fill out the list below to ensure that the necessary information is at hand when ordering spare parts etc.

Serial No

Delivery date

Dealer

Tel. / E-mail



Merkurvej 25
DK 6000 Kolding
Denmark
Tel: +45 75553644
E-mail: info@greentec.eu
web: www.greentec.eu
Opening hours: Mon-Fri 8-16

ORDERING PARTS

When ordering parts please refer to your parts list to help your dealer with your order.

- *Part number and quantity*
- *Description*
- *Machine model number*
- *Serial number of the machine*
- *Delivery instructions (e.g. next day).*

Delivery is normally via carrier direct to your dealer. Please check with your dealer for stock availability and arrangement of dispatch. Ensure you or your dealer has sufficient cover for parts requirement outside factory hours.

Important Note:

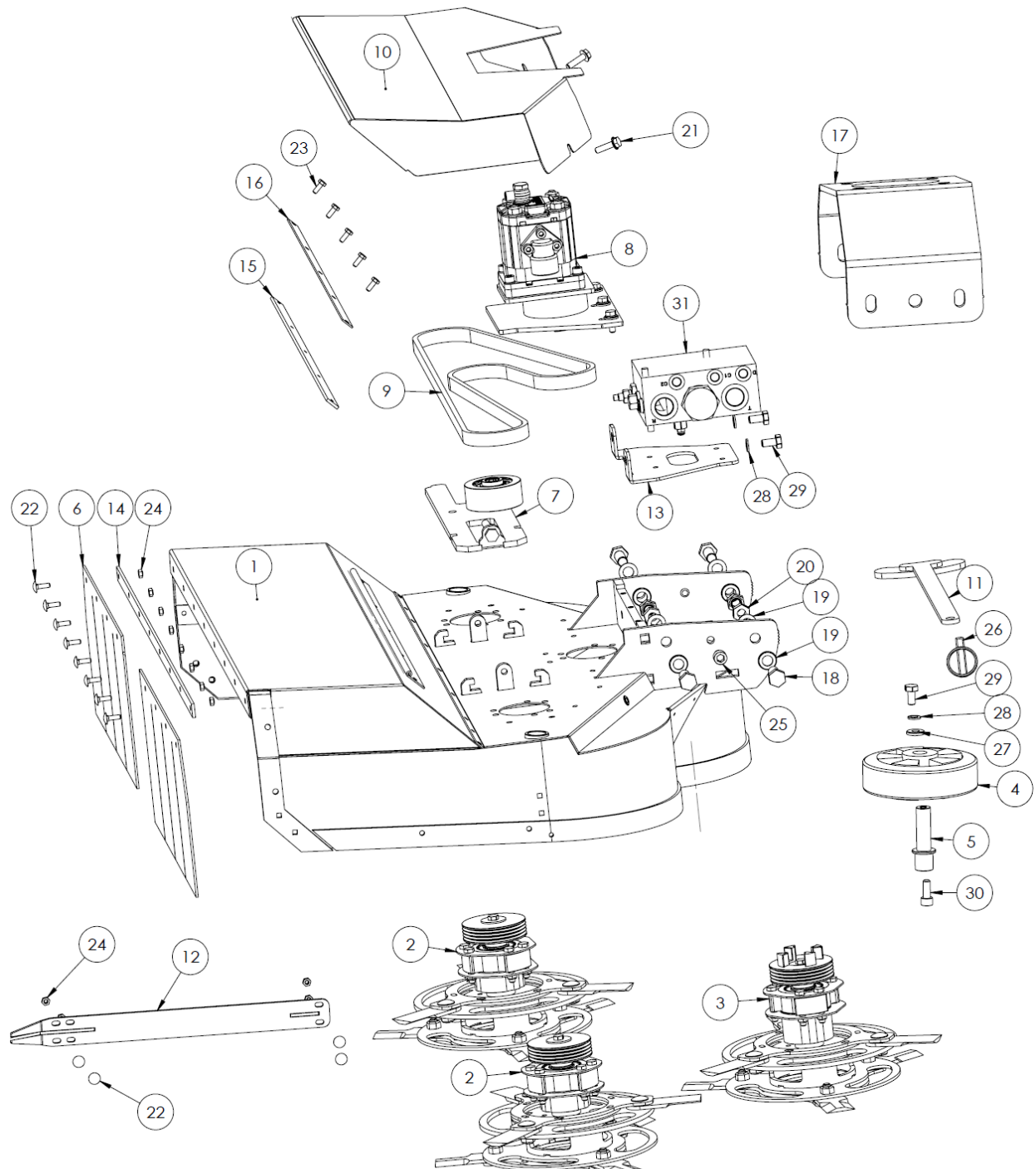
The information contained in this manual is correct at the time of publication. However, in the course of constant development, changes in specification are inevitable. Should you find the information given in this book different to the machine it relates to, please contact the "After Sales Department" for advice.

Key:

LH: Left hand
RH: Right hand

SPARE PARTS

Main frame Overview



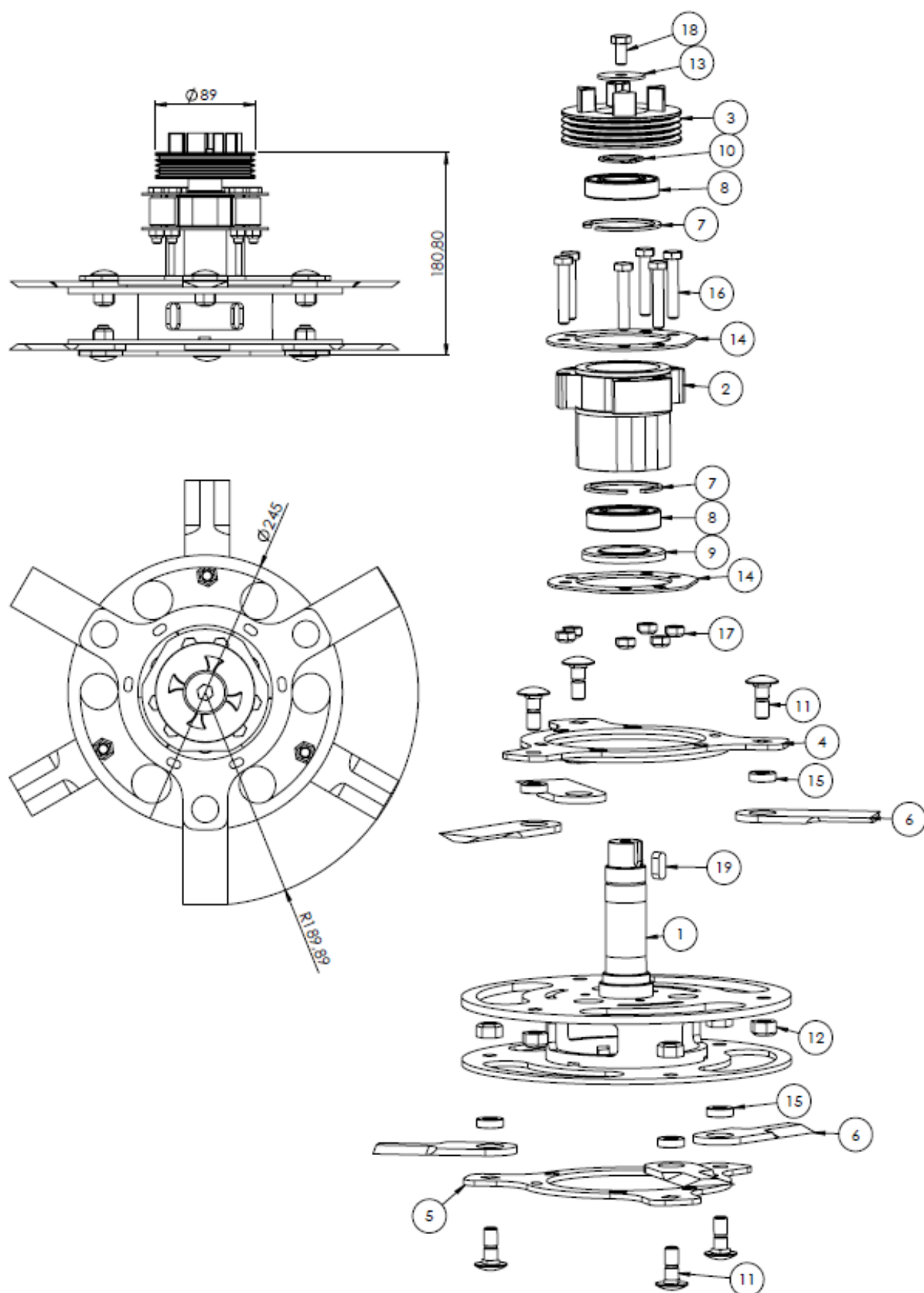
Main frame Overview

ITEM NO.	PART NUMBER	DESCRIPTION	QTY.
1	8021500	Main Body RH/LH	1
2		See "Rotor outer"	2
3		See "Rotor center"	1
4	8026001	Support wheel	1
5	8021001	Wheel shaft	1
6	8028001	Flap guard (two-piece)	2
7		See "Tensioning system"	1
8		See "Motor Transmission"	1
9	8024001	Belt	1
10	8021501	Gaurd for belt drive	1
11	8021502	Tool for blade change	1
12	8021503	Branch guide	1
13	8021007	Bracket for flowdividen "OPTION"	1
14	8021002	Mounting rail for flap guard	1
15	8021003	Threaded bar for hinge	1
16	8021004	Support rail	1
17	8481503	Adapter	1
18	8222007	Bolt	4
19	8222009	Facetwasher	8
20	1061042	Lock nut	4
21	8482003	Bolt for cover	2
22	8482002	Carriage bolt	12
23	8222019	Bolt	5
24	8252002	Lock nut	12
25	8482005	Bolt	2
26	9040213	Lynch pin	1
27	8142003	Washer	1
28	8222003	Spring washer	3
29	8222002	Sætbolt	3
30	8022001	Bolt	1
31	603014-25	Flowdividen "OPTION"	1

Rotor Outer (2 pcs. on machine)

ITEM NO.	PART NUMBER	DESCRIPTION	QTY.
1	8021504	Rotor shaft with blade carrier (outer)	1
2	8021005	Bearing housing outer	1
3	8024002	Pully	1
4	8021505	Upper blade carrier	1
5	8021006	Lower blade carrier	1
6	8027001	Blade	6
7	160121.0	Circlip	2
8	160120.0	Bearing	2
9	8024003	Seal of metal	1
10	200121.0	Circlip	1
11	8022002	Blade bolt	6
12	8622003	Lock nut	6
13	8021008	Mount disk	1
14	8021009	Spacer	2
15	8021010	Blade bush	6
16	8022003	Bolt	6
17	8482009	Nut	6
18	8024006	Key	1
19	8482010	Bolt	1

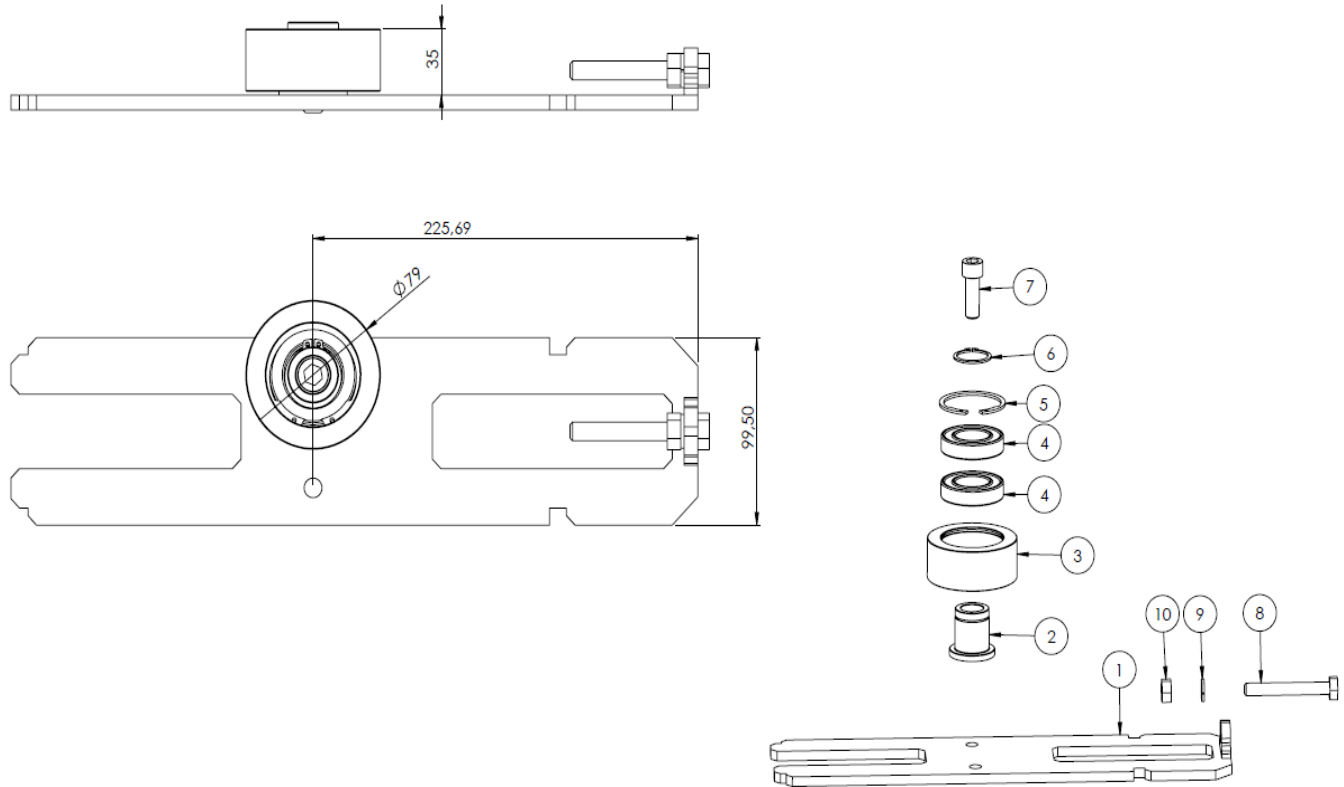
Rotor Centre (1 pcs. on machine)



Rotor Centre (1 pcs. on machine)

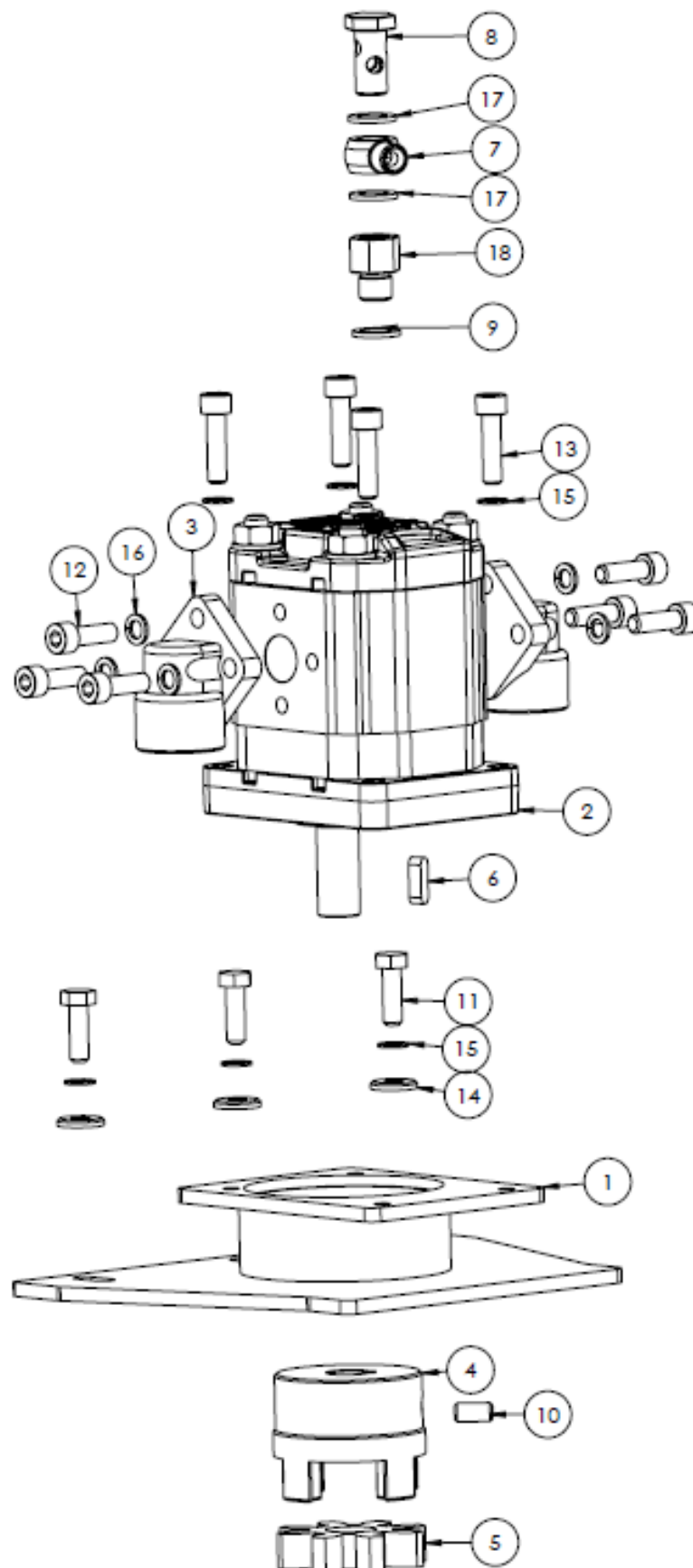
ITEM NO.	PART NUMBER	DESCRIPTION	QTY.
1	8021506	Rotor shaft with blade carrier (center)	1
2	8021012	Bearing housing for center rotor	1
3	8024004	Pully with claw	1
4	8021505	Upper blade carrier	1
5	8021006	Lower blade carrier	1
6	8027001	Blade	6
7	160121.0	Circlip	2
8	160120.0	Bearing	2
9	8024003	Seal of metal	1
10	200121.0	Circlip	1
11	8022002	Blade bolt	6
12	8622003	Lock nut	6
13	8021008	Mount disk	1
14	8021009	Cover for bearing housing	2
15	8021010	Blade bush	6
16	8022003	Bolt	6
17	8482009	Nut	6
18	8482010	Bolt	1
19	8024006	Key	1

Tensioning system



ITEM NO.	PART NUMBER	DESCRIPTION	QTY.
1	8021507	Tension plate RH/LH	1
2	8021013	Shaft for belt tension	1
3	8024005	Pully for belt tension	1
4	160120.0	Bearing	2
5	160121.0	Circlip	1
6	200121.0	Circlip	1
7	8022004	Bolt	1
8	8022005	Bolt	1
9	8222003	Washer	1
10	8362004	Nut	1

Motor Transmission



Motor Transmission

New MOTOR pos. 2 from serial nbr. 219.....

Oldere motor must be changed with new motor 8173008

Remember to ordre:

1. Port elbow 8483002
2. Banjo connector 8173001
3. Banjo bolt 8173002
4. Seals 8173003

[See partsbulletin P002-2019](#)

New MOTOR pos. 2a from serial nbr. 220.....

ITEM NO.	PART NUMBER	DESCRIPTION	QTY.
1	8021508	Claw housing	1
2	8143008	Motor with front bearing alu flange	1
2a	6701975	Motor with front bearing cast iron flange	1
3	8483002	Port elbow incl. pos 12 and 16	2
4	8026002	Claw	1
5	8486004	Elastic element	1
6	8024007	Key	1
7	8173001	Banjo connector	1
8	8173002	Banjobolt	1
9	8173003	Seal	3
10	8173007	Pinolskrue	1
11	8362006	Bolt	3
12	Use pos.3	Bolt	6
13	1110810	Bolt	3
14	8142007	HD Washer	3
15	200156.0	Washer	7
16	Use pos.3	Washer	6
17	8143005	Seals	2
18	8173008	Nipple	1
NS	6701938	Seal kit for motor	1

Stickers



RC102 klistermærke – 630 x 100 mm



RC102 advarselsmærker – 227 x 80 mm



GreenTec_Plibudsmærker – 130 x 25 mm



Made in denmark – 50 x 16 mm

RC102 KITS

ITEM NO.	PART NUMBER	DESCRIPTION	QTY.
	RC102KITS	Stickerkit RC-102 (GreenTec)	1

Parts Bulletin

Motor on RC102 deleted

BulletinNbr: P002-2019

From: 01-03-2019



This bulletin applies to those Machines:

- RC102 (until Sparepart nbr. 218832089)

**Motor with nbr. 8143001 deleted.
Replacing Motor nbr. 8143008**

All RC102 before serialnumber 218832089, has hydraulic motor with partnbr. 8143001. When this motor is replaced, use the new motor with Partnbr. 8143008.

When the old motor is changed you must ordre these parts too:

- Portflanger 8483002 (2 stk.)
- Banjo 8173001 (1 stk.)
- Banjo bolt 8173002 (1 stk.)
- Copperwasher 8173003 (3 stk.)



Changes is made in all new partsbooks

Kontakt: GreenTec Parts | Tel: +45 75 55 36 44 | E-mail: parts@greentec.eu



Merkurvej 25 | DK-6000 Kolding | Tel.: +45 75 55 36 44 | info@GreenTec.eu | www.GreenTec.eu

Cutting Edge Technology