

MULTI CARRIER FOX



PARTS

UK

1th Edition 2021

 **GREENTEC**

Cutting Edge Technology



IMPORTANT INFORMATION

GreenTec FOX

PARTS

1th Edition – 2021

NOTICE: Please ensure that this manual is handed to the operator before using the machine for the first time. If the machine is resold, the Parts list must be given to the new owner!

The information contained in this Parts list is correct at the time of publication. However, in the course of constant development, changes in specification are inevitable. Should you find the information given in this book different to the machine it relates to please contact the “After Sales Department” for advice.



Merkurvej 25
DK 6000 Kolding
Denmark
Tel: +45 75553644
Fax: +45 75554243
Email: info@greentec.eu
web: www.greentec.eu

CONTENTS

CONTENTS	4
INTRODUCTION	5
USEFUL INFORMATION	6
ORDERING PARTS	7
SPARE PARTS	8
Fox cpl.....	8
Main frame cpl.....	10
Treepoint mounting FOX, Kat 1&2 OPTE1257.....	11
Adapter RI 60-80 OPTE1258/1258.1	12
Adapter BR 70 OPTE1259	13
Stickers	14

INTRODUCTION

Dear customer!

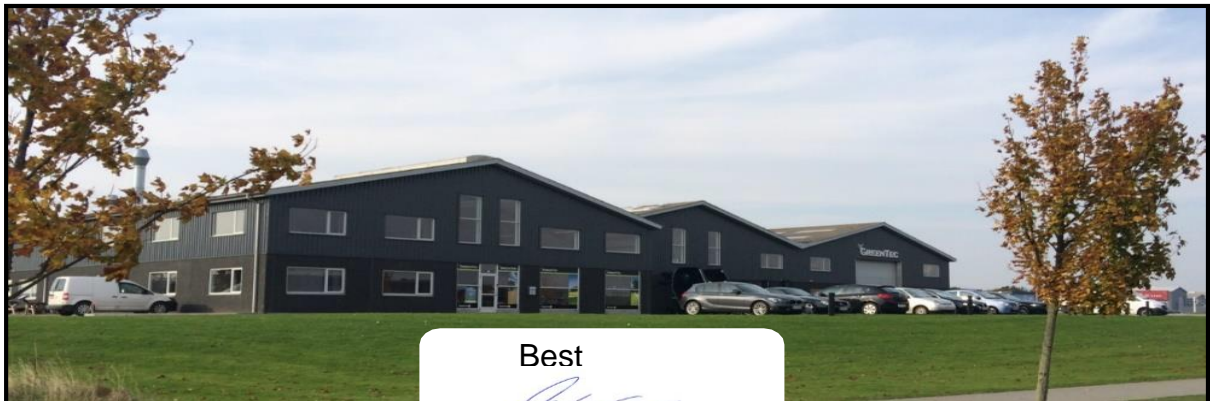
Your new GreenTec machine is constructed with background in more than 20 years' experience with tractor-mounted machines to maintenance of green areas. This machine is produced by the latest technology and recognized safety regulations, standards and regulations.

We want to make a product available in such a way, that neither the use of the machine during transportation or maintenance of the machine causes any damage or misunderstandings.

This parts list contains information that are important and useful for maintaining your GreenTec machine's reliability, dependability and value.

You are welcome to visit our website www.greentec.eu - where the login via the dealer's access gives you the latest updates on instructional and part books on our entire product range.

We hope you will be pleased with your new GreenTec machine.



Best

A handwritten signature in blue ink, appearing to read "John Christensen".

John Christensen
SalesDirector GreenTec

GreenTec's vision is to develop and sell quality machines for the maintenance of green areas, including in agriculture, in industry, at airports and in the local sector. Through innovative product development, we will strive to become a leader in our field.

All machines are developed in a simple and functional design in close cooperation with dealers and end users. It is our goal to cover every need in the market segment with preferably two different solutions. In-depth analysis of requirements and serious advice to the customer is offered the best solution, where individual needs can be met through the modularity of the product program.

Our goal is also to offer the best possible after sales service, and a quick and efficient spare parts supply.

USEFUL INFORMATION

Before using the machine for the first time, it's the seller's responsibility that the buyer is given this parts list. If the machine is resold, the parts list must be transferred to the new owner.

Please fill out the list below to ensure that the necessary information is at hand when ordering spare parts etc.

Serial No	<input type="text"/>
Delivery date	<input type="text"/>
Dealer	<input type="text"/>
	<input type="text"/>
	<input type="text"/>
Tel/ fax	<input type="text"/>



Merkurvej 25
DK 6000 Kolding
Danmark
Tel: +45 75553644
Fax: +45 75554243
Email: info@greentec.eu
web: www.greentec.eu
Opening hours: Mon-Fri 8-16

ORDERING PARTS

When ordering parts please refer to your parts list to help your dealer with your order.

- **Part number and quantity**
- **Description**
- **Machine model number**
- **Serial number of the machine**
- **Delivery instructions (e.g. next day).**

Delivery is normally via carrier direct to your dealer. Please check with your dealer for stock availability and arrangement of dispatch. Ensure you or your dealer has sufficient cover for parts requirement outside factory hours.

Important Note:

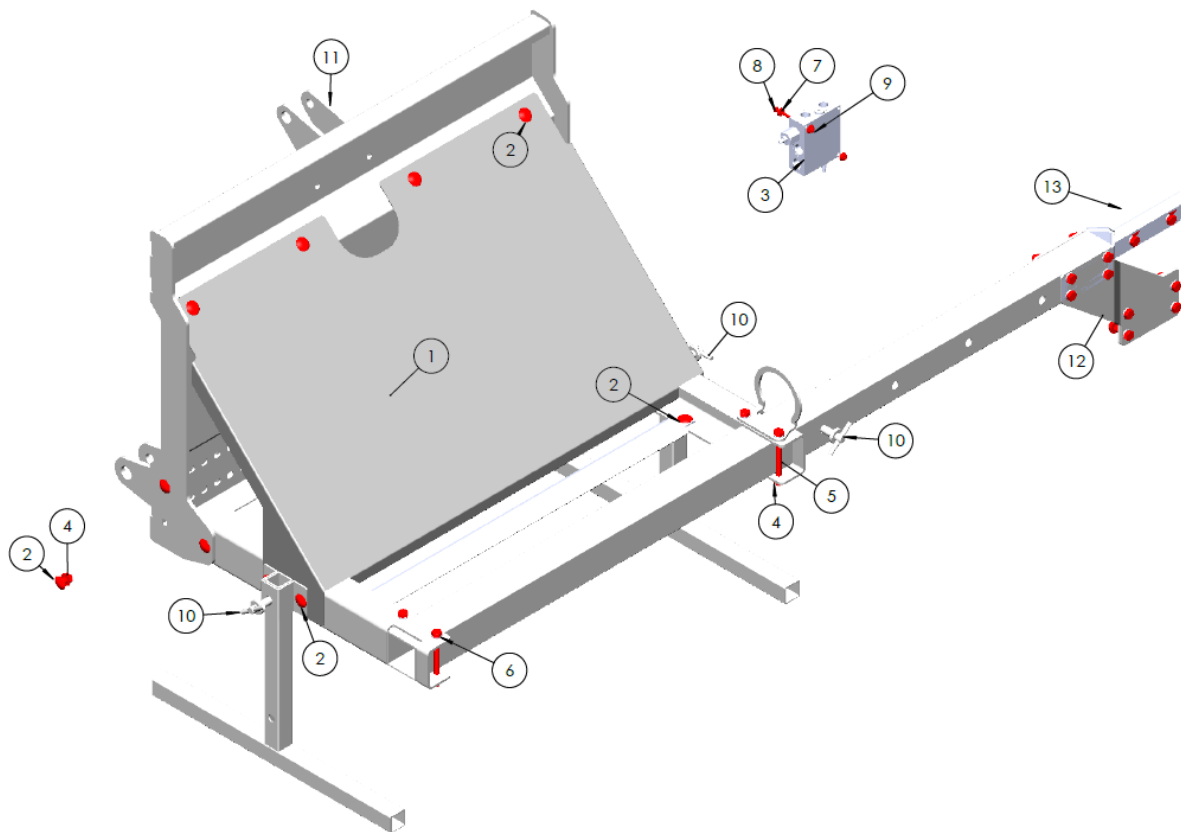
The information contained in this manual is correct at the time of publication. However, in the course of constant development, changes in specification are inevitable. Should you find the information given in this book different to the machine it relates to, please contact the “After Sales Department” for advice.

Key:

LH: Left hand
RH: Right hand

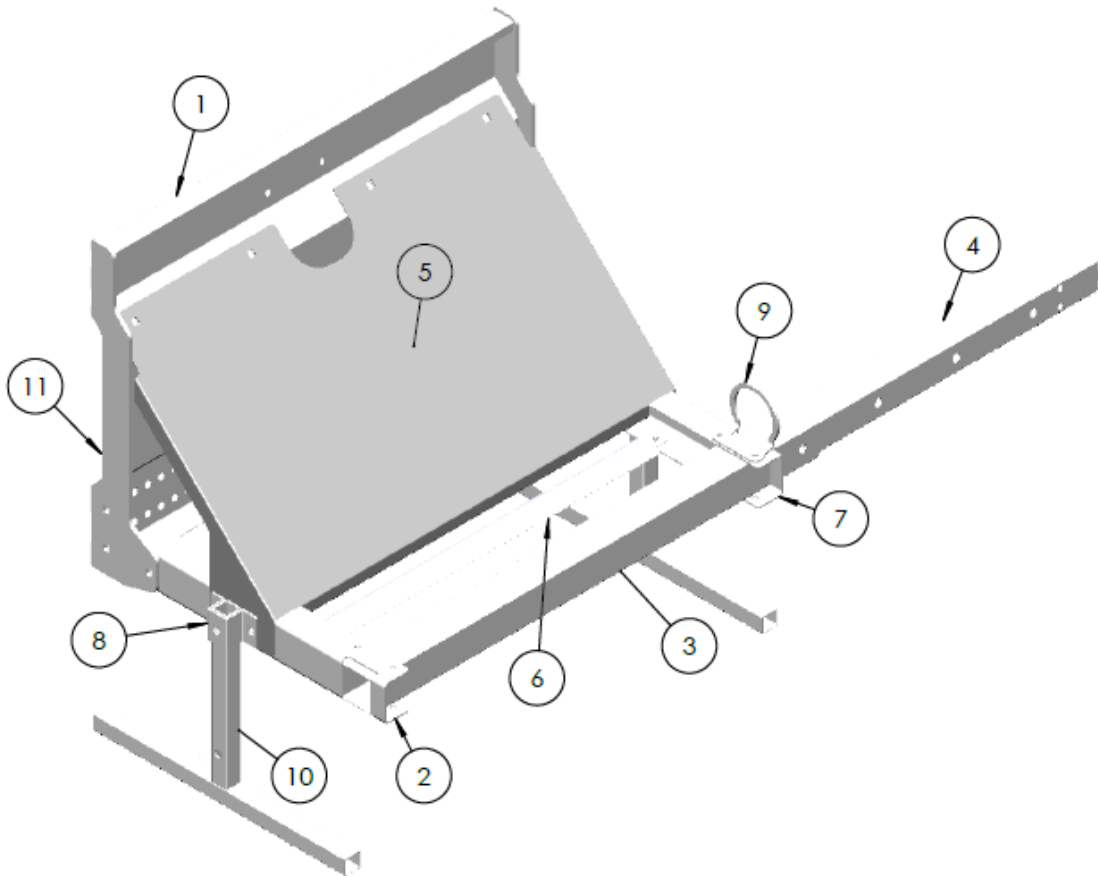
SPARE PARTS

Fox cpl.



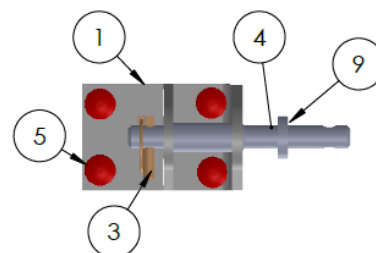
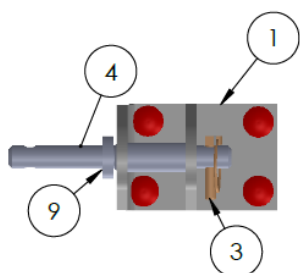
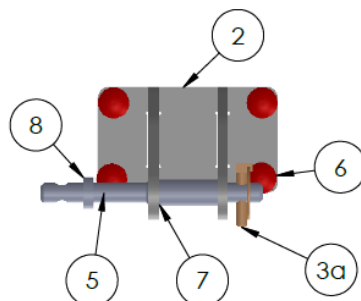
ITEM NO.	PART NUMBER	DESCRIPTION	QTY.
1	6701837	Main frame cpl. See drawing	1
2	6701965	Bolt	18
3	6701963-25/40	Flowdivider	1
4	6701984	Nut	22
5	2770487	Bolt	4
6	6701641	Washer	4
7	6702232	HD washer	4
8	6702233	Bolt	2
9	9040187	Nut	2
10	6310220	Pin	3
11	OPTE1257	Treepoint mounting FOX, Kat 1&2 – see drawing	1
12	OPTE1258	Adapter RI60-80 – see drawing	1
13	OPTE1259	Adapter BR70 - see drawing	1

Main frame cpl



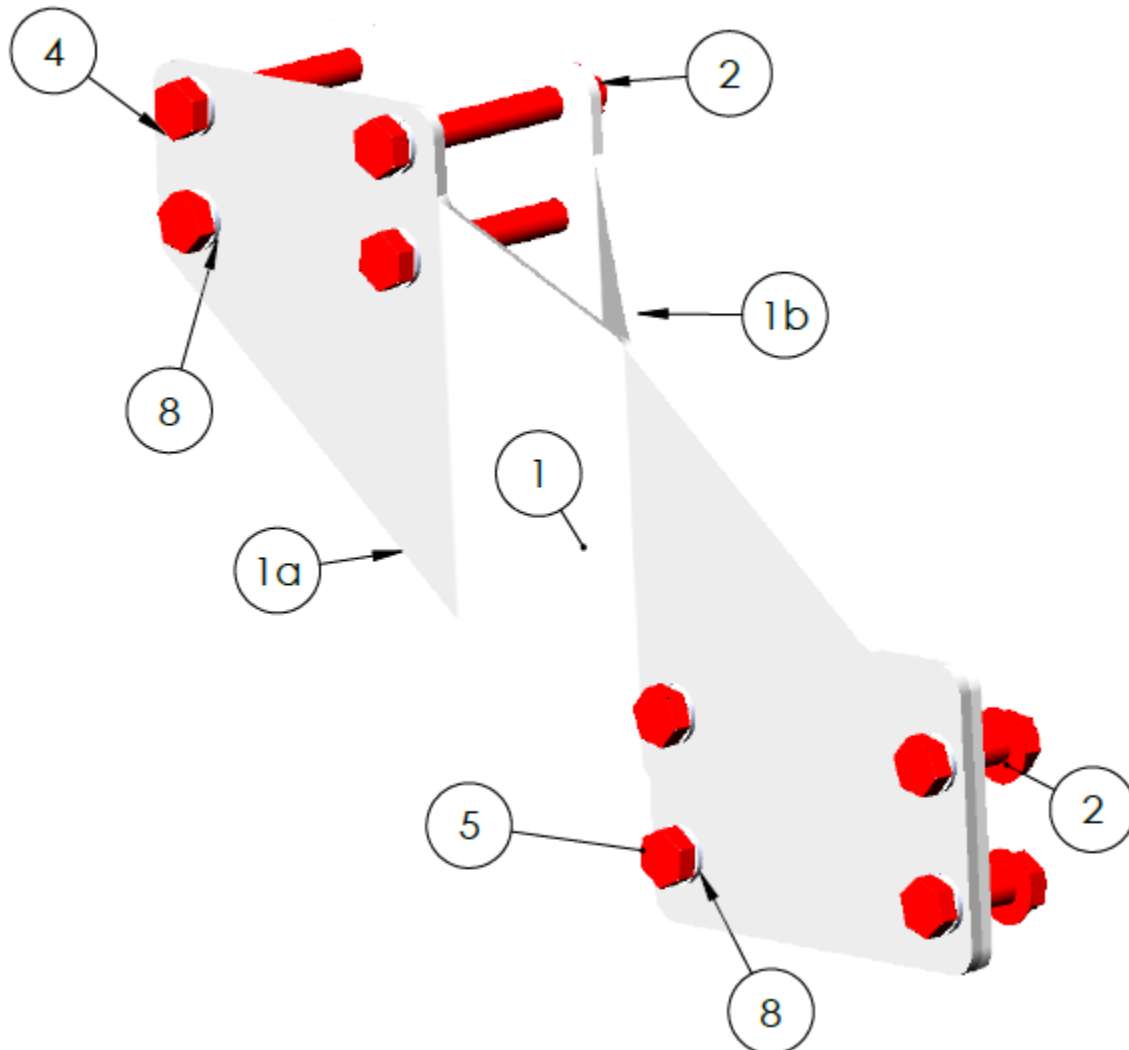
ITEM NO.	PART NUMBER	DESCRIPTION	QTY.
1	6701837.1	Back plate	1
2	6701837.3	Side beam R	1
3	6701837.5	Profilpipes	1
4	6701837.15	Profilpipes tele	1
5	6701837.14	Shield	1
6	6701837.4	Guide	1
7	6701837.18	Side beam L	1
8	6701837.6	Supportleg holder	2
9	6701837.13	Hoseholder	1
10	6701969	Supportleg cpl.	2
11	6701837.2	Sideplate	2

Treepoint mounting FOX, Kat 1&2 OPTE1257



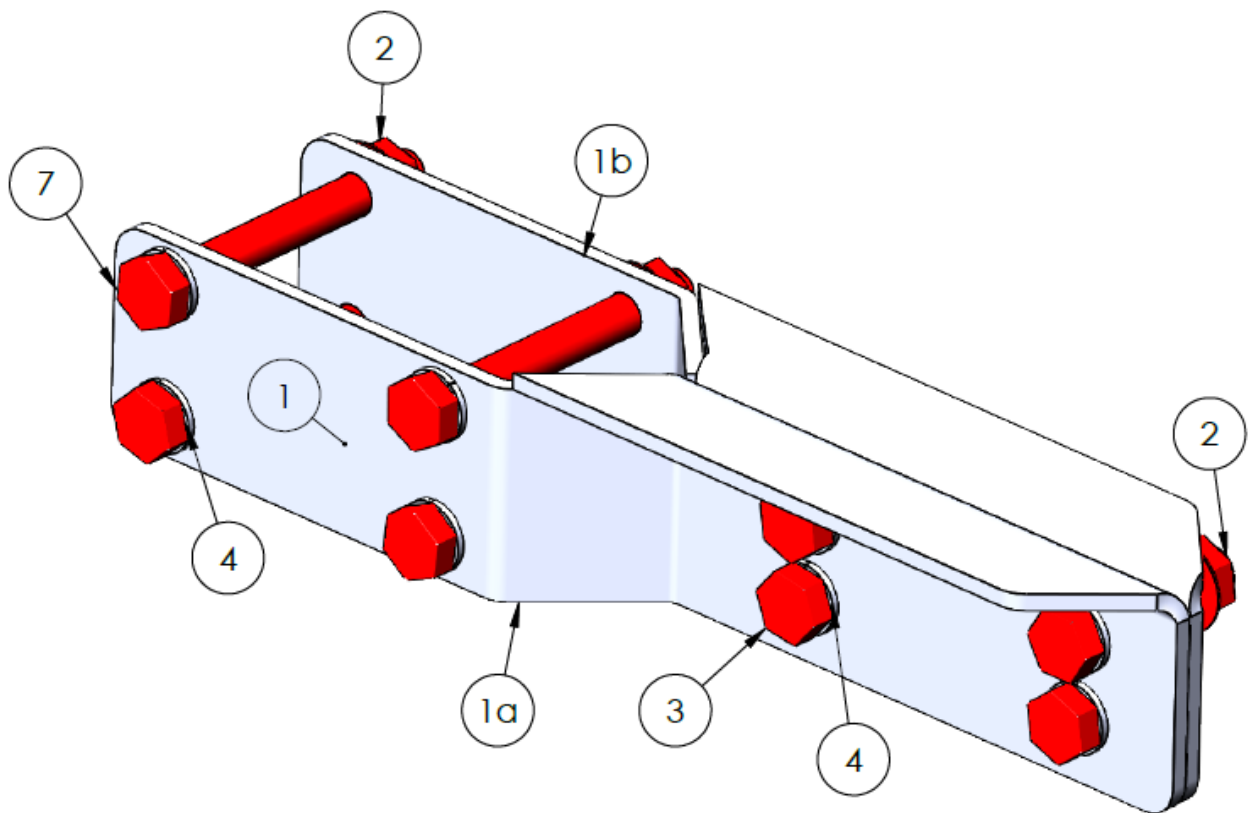
ITEM NO.	PART NUMBER	DESCRIPTION	QTY.
1	6702227	Treepointmounting bottom	2
2	6702228	Treepointmounting top	1
3	9040213'	Split	2
3a	8146002	Split	1
4	6701973'	Liftbolt	2
5	6701965'	Bolt	12
6	6701984'	Nut	12
7	6701972'	Special bolt	1
8	6702674'	Distance washer	1
9	6702675'	Diatance washer	2
NS	6701970B	Boltkit cpl. (xxx ' included)	

Adapter RI 60-80 OPTE1258/1258.1



ITEM NO.	PART NUMBER	DESCRIPTION	QTY.
1	6702450	Adapter cpl.	1
1a	6701837.16	Adapterplate R	1
1b	6701837.17	Adapterplate L	1
2	6701984	Nut	8
4	931121002	Bolt	4
5	2770397	Bolt	4
6	6701641	Washer	8
NS	GT-OPTE1258	Hose kit 40L	1
NS	GT-OPTE1258.1	Hose kit 25L	1

Adapter BR 70 OPTE1259



ITEM NO.	PART NUMBER	DESCRIPTION	QTY.
1	6702229	Adapter	1
1a	6701837.19	Adapterplate R	1
1b	6701837.20	Adapterplate L	1
2	6701984	Nut	8
3	2770397	Bolt	4
4	6701641	Washer	8
5	931121002	Bolt	4
NS	GT-OPTE1259	Hose kit 40L	1

Stickers



NO.	PART NUMBER	DESCRIPTION	QTY.
1	6702231	Stickers kits FOX 1902 cpl.	1



Merkurvej 25 | DK-6000 Kolding | Tel.: +45 75 55 36 44 | info@GreenTec.eu | www.GreenTec.eu

Cutting Edge Technology